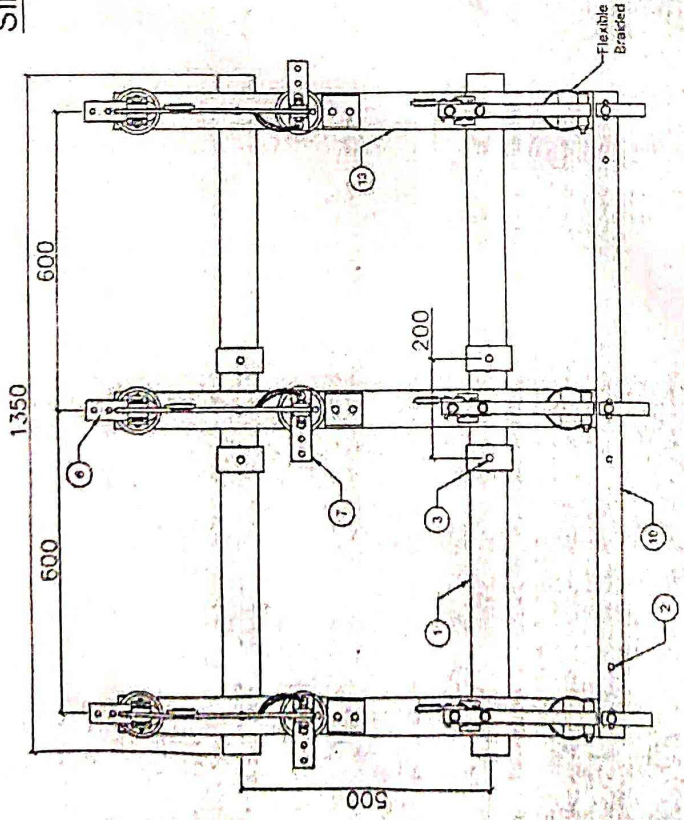
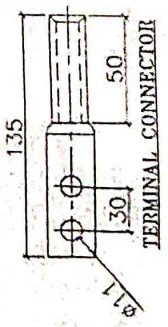


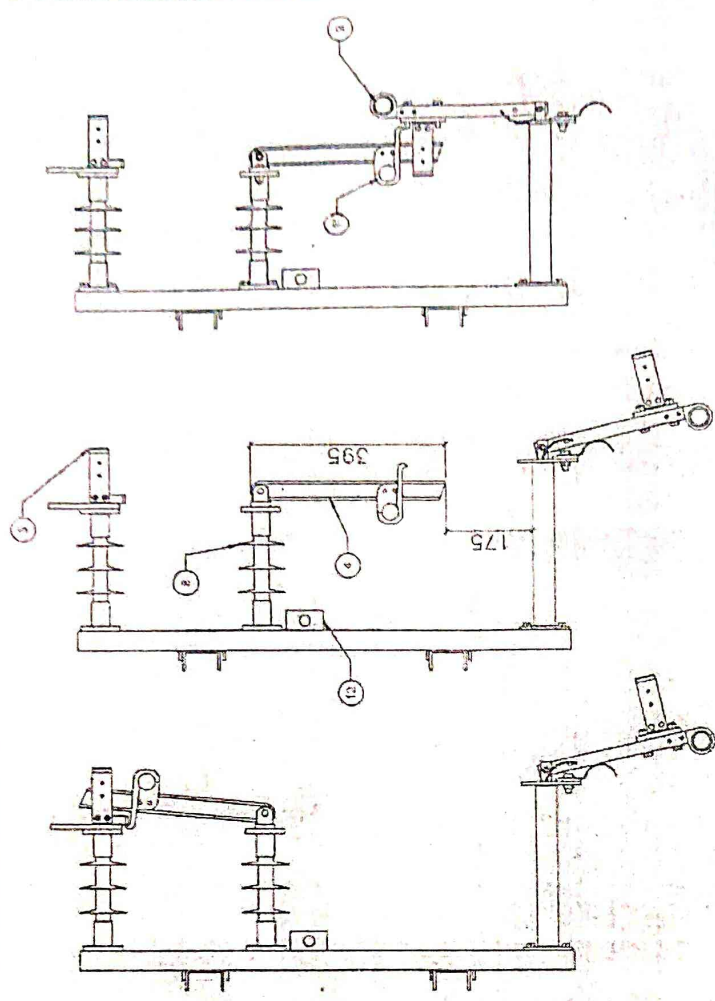
Drawing No: - GPRD - 39  
Single Pole Mounted ABEB



TOP VIEW



TERMINAL CONNECTOR



POSITION-1  
(ON POSITION)

POSITION-2  
(OFF POSITION)  
SIDE VIEW

POSITION-3  
(EARTH POSITION)

13	Base Chunnel	3	C 75X40X6	F.R.P	F.R.P (WIMBLESTER)	7	Outgoing Terminal	3	Copper Alloy	Shred Tin Plated	
12	Pin Support Chimp	3	C 75X40X6	F.R.P	F.R.P (WIMBLESTER)	6	Incoming Terminal	3	Copper Alloy	Shred Tin Plated	
11	Insulating Operating Hook	3	-	SS	-	5	Fx Contact	6	EC Contact	Shred Tin Plated	
10	GI Strip	1	50X8	MS	HOG	4	Moving Contact	3	OTBMS Sht	-	
9	Operating Hook	3	-	Aluminium	-	3	Mounting	2	M10 BOLT	Shredless Steel	
8	11KV Post Insulator	6	25-term High	Polymeric	Min. 320mm CD	2	Earthing Terminal	2	C 75X40X6	F.R.P	
No.	PART NAME	QTY	SIZE	MATERIAL	REMARKS	No.	PART NAME	QTY	SIZE	MATERIAL	REMARKS

**NOTES:**  
 1. ALL DIMENSIONS ARE IN MM UNLESS OTHERWISE NOTICED.  
 2. IN DWS, TOLERANCE SHALL BE +0.25 MM, 1 MM. (IF NOT MENTIONED IN TECH SPECIFICATION)  
 3. ALL FERROUS MATERIALS SHOULD BE HOT DIP GALVANIZED AS PER IS.  
 4. EARTH ELECTRODE SHOULD BE OF 50MM OD 3 MTR LONG CLASS B HOT DIP GALVANIZED.  
 5. CONNECTING EARTH STRIP FROM SWITCH TO EARTH ELECTRODE SHOULD BE 30X3MM SIZE.

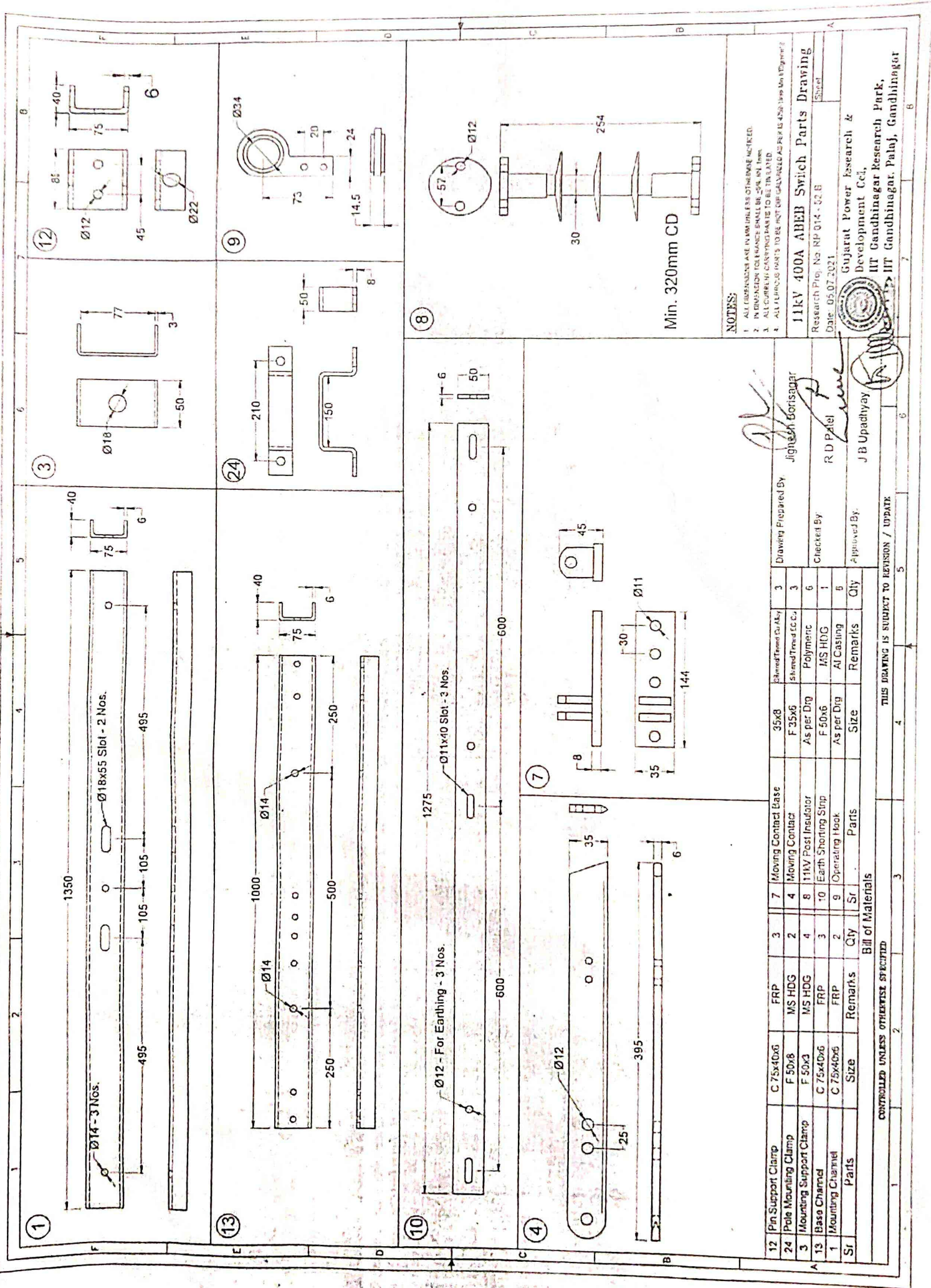
- All dimensions are to be read and not to be measured.
- In case of any discrepancy between GPRD cell - GUMVL, COC Drgs. And other Drgs. Discrepancy should be brought to the notice of the GPRD before commencement of the work.
- In case of any ambiguities on site, the GPRD should be informed.
- It is must to inform and to have prior permission of GPRD before making any changes on site.
- Refer the latest revised drawing.

Project Name: 11KV ABEB SWITCH  
 Title: 11 KV 400 Amp Air Break Switch With Earth Blade Facility

Drawing Prepared By: Jignesh Bhatnagar  
 Checked By: R D Patel  
 Approved By: J B Upadhyay

Research Proj. No: RP 014 - 52.A - GA  
 Date: 05.07.2021

Gujarat Power Research & Development Cell,  
 IIT Gandhinagar Research Park,  
 IIT Gandhinagar, Palaj, Gandhinagar.



**NOTES:**

1. ALL DIMENSIONS ARE IN MILLIMETERS UNLESS OTHERWISE SPECIFIED.
2. IN DIMENSION TOLERANCE SHALL BE  $\pm 0.1$  MM.
3. ALL CURRENT CARRYING PARTS TO BE TILATED.
4. ALL ELECTRICAL PARTS TO BE HOT DIP GALVANIZED PER IS 2020.

**11kV 400A ABBE Switch Parts Drawing**

Research Proj. No NP 014 - 02 B  
Date: 05.07.2021

Gujarat Power Research & Development Cell,  
IIT Gandhinagar Research Park,  
IIT Gandhinagar, Palaj, Gandhinagar

Sr	Parts	Size	Remarks	Qty	Sr	Parts	Size	Remarks	Qty
12	Pin Support Clamp	C 75x40x6	FRP	3	7	Moving Contact Base	35x8	Shaded/Traced Qty/Qty	3
24	Pole Mounting Clamp	F 50x8	MS HDG	2	4	Moving Contact	F 35x6	Shaded/Traced Qty/Qty	3
3	Mounting Support Clamp	F 50x3	MS HDG	4	8	11kV Post Insulator	As per Dwg	Polymeric	6
13	Base Channel	C 75x40x6	FRP	3	10	Earth Shorting Strip	F 50x6	MS HDG	1
1	Mounting Channel	C 75x40x6	FRP	2	9	Operating Hook	As per Dwg	Al Casting	6
	Parts	Size	Remarks	Qty		Parts	Size	Remarks	Qty

**Bill of Materials**

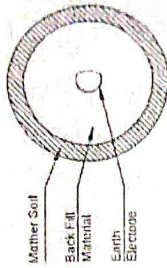
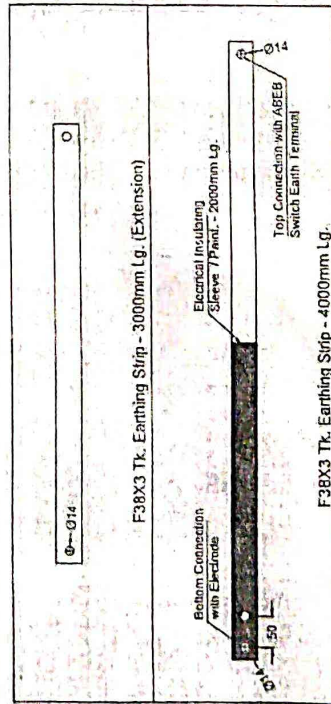
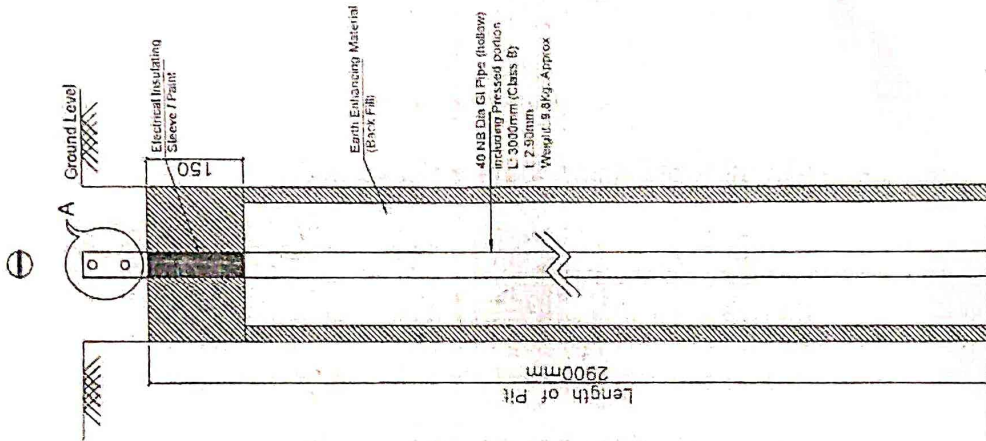
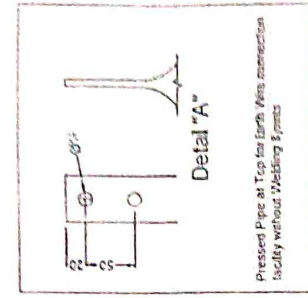
CONTROLLED UNLESS OTHERWISE SPECIFIED

THIS DRAWING IS SUBJECT TO REVISION / UPDATE

Drawing Prepared By: Jignesh Borisagar  
Checked By: R D Patel  
Approved By: J B Upadhyay



**Drawing No : GPRD - 13**  
**Maintenance free Earthing for ABEB Switch Using GI Strip (38X3mm)**



Bill of Material	
S.No	Qty
1	40NB Pipe 3000mm Lg. use Electrode
2	F38X3 Tk. 3000mm Lg. Earthing Strip
3	F38X3 Tk. 4000mm Lg. Earthing Strip
4	MIXED GRADE HOT DIP GALV. ZINC COATED (H.D.G.) 5 Tons
5	Rack F Ring Component (over 45 kg each Eng)

**NOTES:**

1. ALL DIMENSIONS ARE IN MM UNLESS OTHERWISE NOTED.
2. IN DIMS & WEIGHT TOLERANCE SHALL BE ±5%.
3. ALL MATERIAL IS HOT DIP GALVANISED (85 MG/CM²) AFTER FABRICATION.

- All dimensions are to be read and not to be measured.
- In case of any discrepancy between GPRD cell - GUYRL, COG Drgs. And other Drgs. Discrepancy should be brought to the notice of the GPRD before commencement of the work.
- In case of any ambiguities on site, the GPRD should be informed.
- It is must to inform and to have prior permission of GPRD before making any changes on site.
- Refer the latest revised drawing.

Project Name:

**EARTHING**

Title

**Maintenance Free Earthing For  
 ABEB Switch Using GI Strip**

Drawing Prepared By:

Jignesh Borisagar

Checked By:

R D Patel

Approved By:

J B Upadhyay

Research Proj. No.

RP 014 - 52.D - Earthing

Date

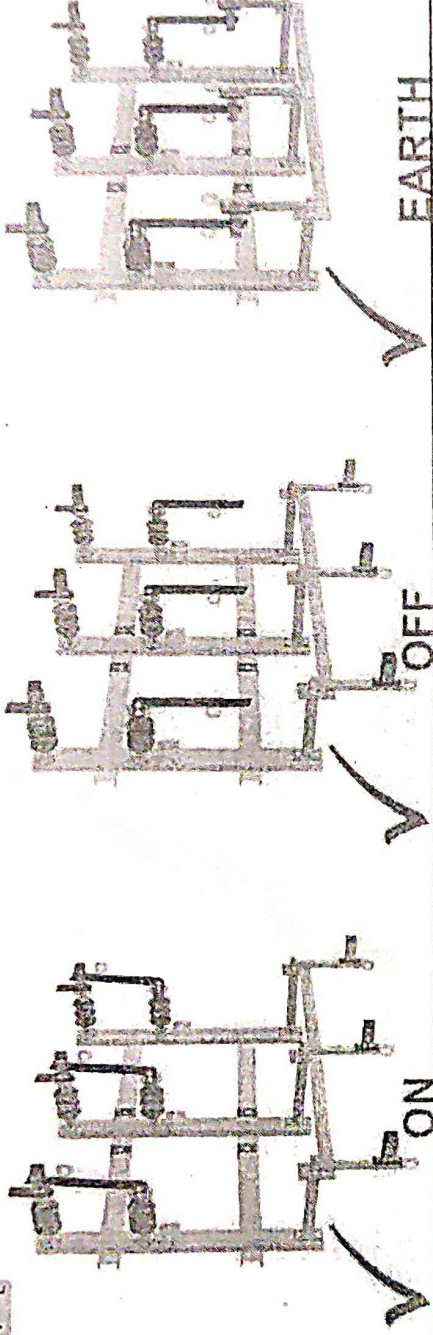
05.07.2021

Gujarat Power Research &  
 Development Cell,  
 IIT Gandhinagar Research Park,  
 IIT Gandhinagar, Palaj, Gandhinagar

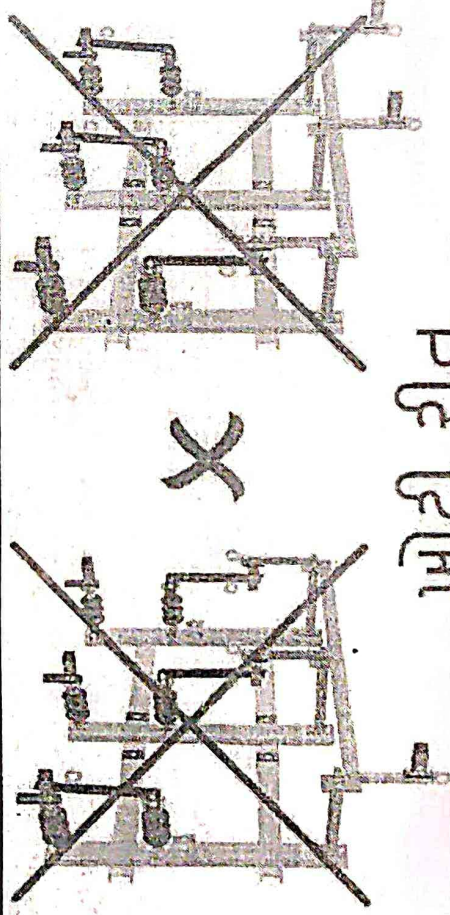




# Gujarat Power Research & Development Cell



સ્વિચ પાવર બંધ હોય ત્યારે જ આજી-બંધ કરવું



ખોટી રીત

AT No.

Manufactured by:

Banner Size - 400x300mm

Banner Material - 3mm PU Foam Sheet

Drawing Prepared by

Jignesh Borsagar

Checked by

P. D. Patel

Approved by

J. B. Upadhyay

11kV 400A ABEB Switch Banner Drawing

Research Proj. No. RP 014 - S2 G - Banner

Date: 05.07.2021

Gujarat Power Research & Development Cell,  
IIT Gandhinagar Research Park,  
IIT Gandhinagar, Palaj, Gandhinagar

CONTROLLED UNLESS OTHERWISE SPECIFIED

THIS DRAWING IS SUBJECT TO REVISION / UPDATE