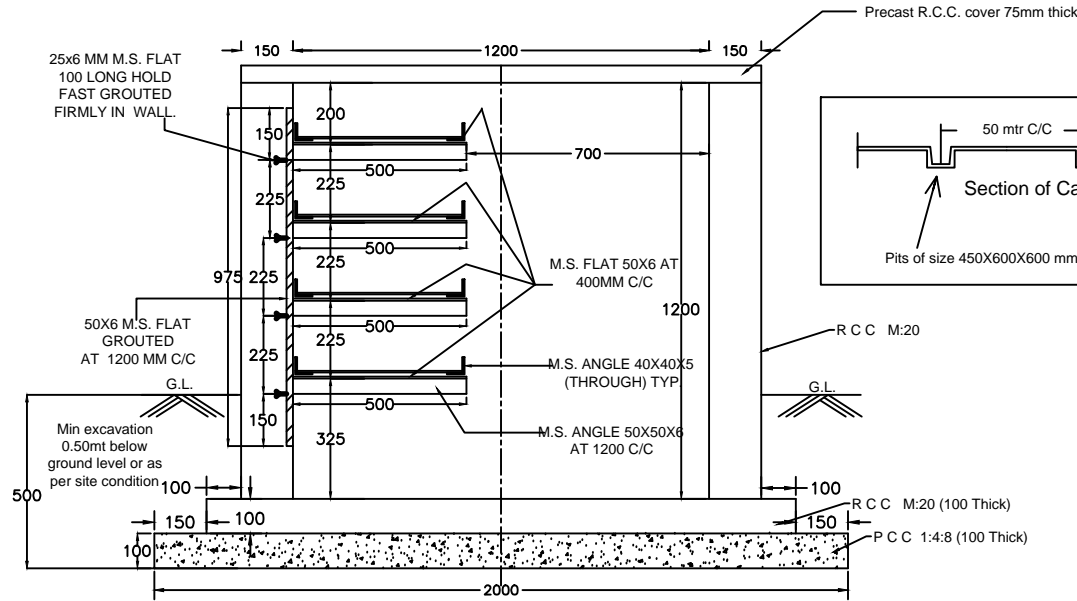


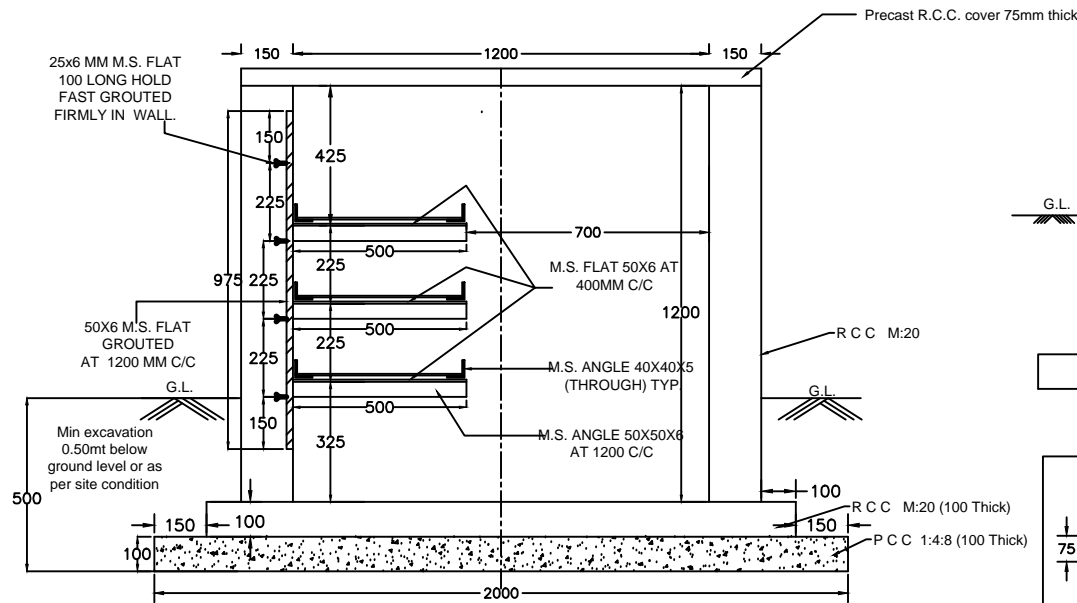
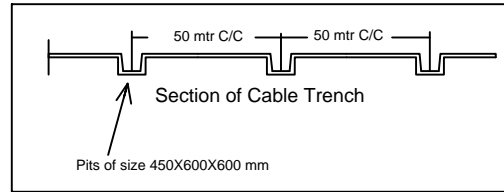
1. ITEM OF M.S. LADDER TRAY IS IN SCOPE OF ELECTRICAL CONTRACTOR.

NOTES:-

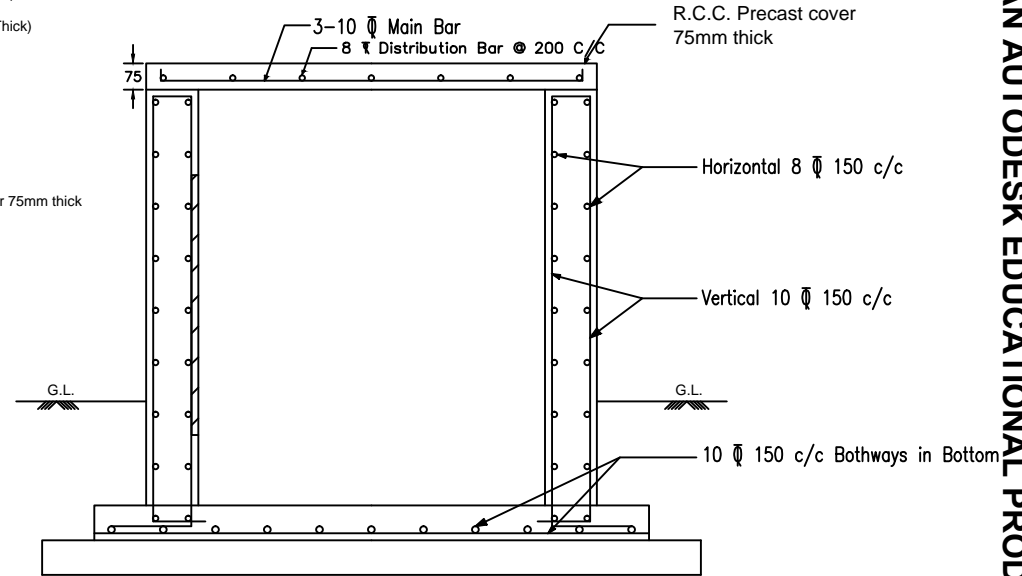
- All dimension are in MM.
- All RCC work is to be carried out as per IS 456(2000).
- CONC.MIX M-20 GRADE
- CEMENT AS PER IS-8112
- Reinforcement bar shall be TMT bars conforming to IS 1786 fe-415 for RCC work. Lap length should be 50 X dia. of bar..
- Sufficient slope (1 in 1000) shall be provided at bottom of cable trench so that rain water (if any) enters may be collected at one point & drain of easily.
- No foundation shall be rest on filledup soil. In case filled soil encountered foundation shall be taken 500mm below virgin soil.
- Clear cover to all reinforcement shall be 20mm.
- Holes shall be kept in RCC wall at required location for entry of cable of equipment as per approved electrical layout.
- Expansion joint to be provided at every 50 mtr length.



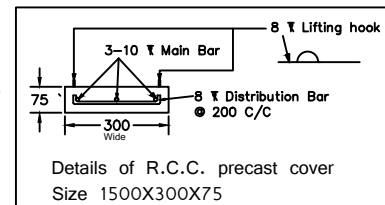
SECTION OF 4 TIER CABLE TRENCH



SECTION OF 3 TIER CABLE TRENCH



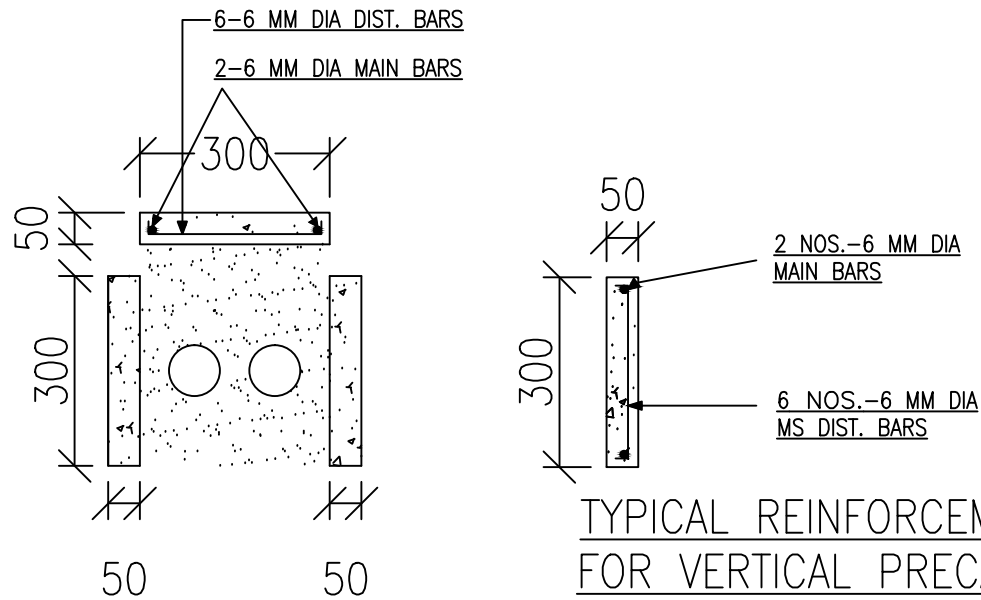
RCC Details of cable trench



Details of R.C.C. precast cover  
Size 1500X300X75

Do not scale this drawing, only written dimension shall be followed.

<b>UTTAR GUJARAT VIJ CO LTD</b> R&C OFFICE, MEHSANA				
<b>4-Tier &amp; 3 Tier Cable Trench for BOL GIDC (Sanand-II)</b>				
<b>Drawing traced from GETCO drawing no. 4S-162/CBLT-018 &amp; GETCO/C/48-001/P-03 and prepared by Civil section</b>				
DRAWN:	CHECKED:	APPD:	SIZE: A4	
SCALE: Not to Scale	DATE:	DRG. NO: UGVCL/R&D-PP/TRENCH/001	SHEET: 1 OF 1	REV: R0



TYPICAL REINFORCEMENT DETAILS FOR VERTICAL PRECAST BLOCK

FOR WALL HEIGHT 300 MM (2 NOS. VERTICAL BLOCKS) & CLEAR WIDTH 300 MM (1 NO. HORIZONTAL BLOCK)

LENGTH OF EACH BLOCK = 1000 MM

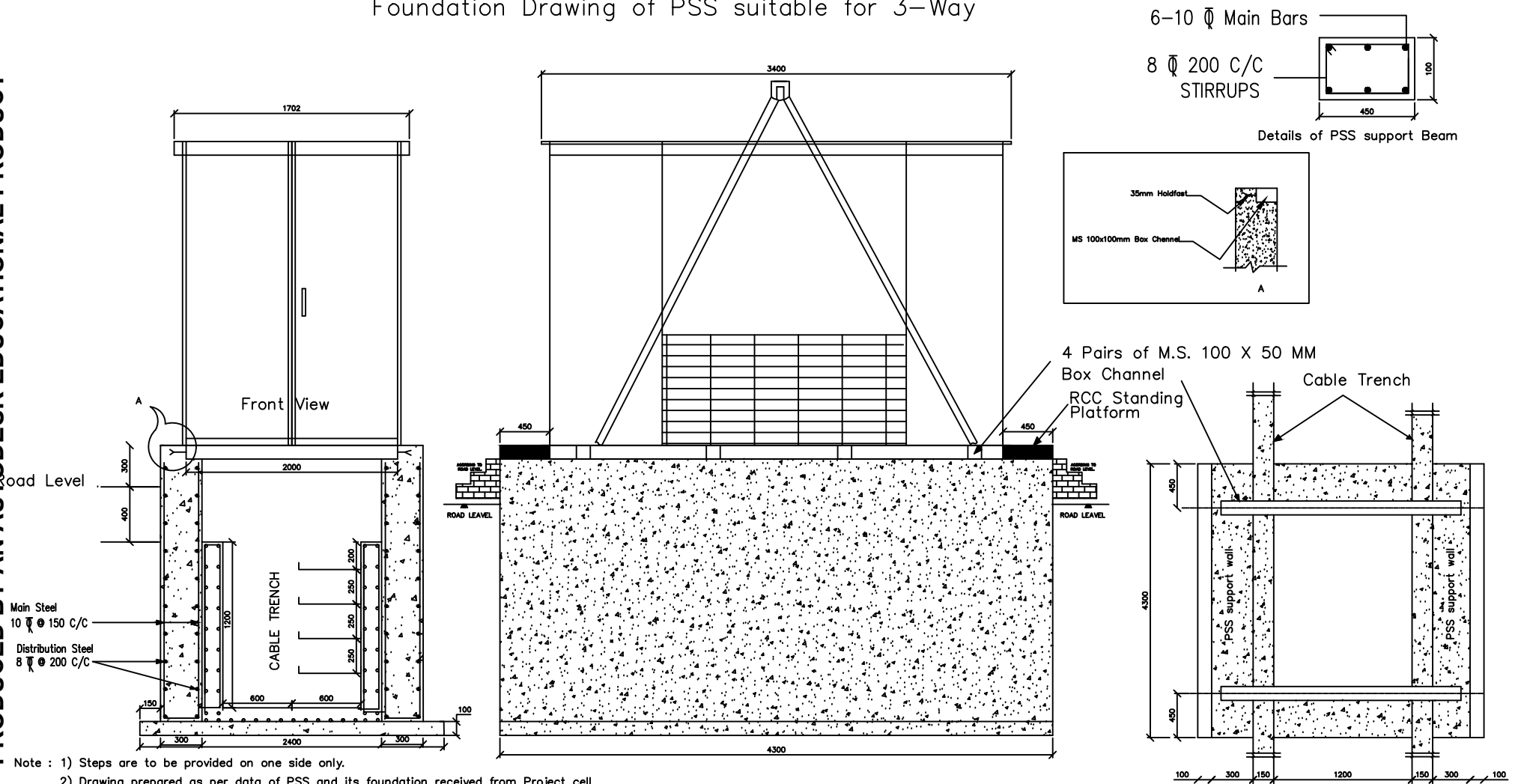
DETAILS OF PRECAST RCC CABLE GUARD BLOCK FOR U.G. CABLE LAYING WORK AT BOL GIDC (Sanand-II)

UTTAR GUJARAT VIJ COMPANY LIMITED
PRECAST R.C.C. CABLE GUARD BLOCK
DRAWING NO. : UGVCL/R&D-PP/PCCT/001
DRG. PREPARED BY CIVIL SECTION
DRAWN BY :
CHECKED BY :
APPROVED BY :

Foundation Drawing of PSS suitable for 3-Way

PRODUCED BY AN AUTODESK EDUCATIONAL PRODUCT

PRODUCED BY AN AUTODESK EDUCATIONAL PRODUCT



Note : 1) Steps are to be provided on one side only.  
2) Drawing prepared as per data of PSS and its foundation received from Project cell

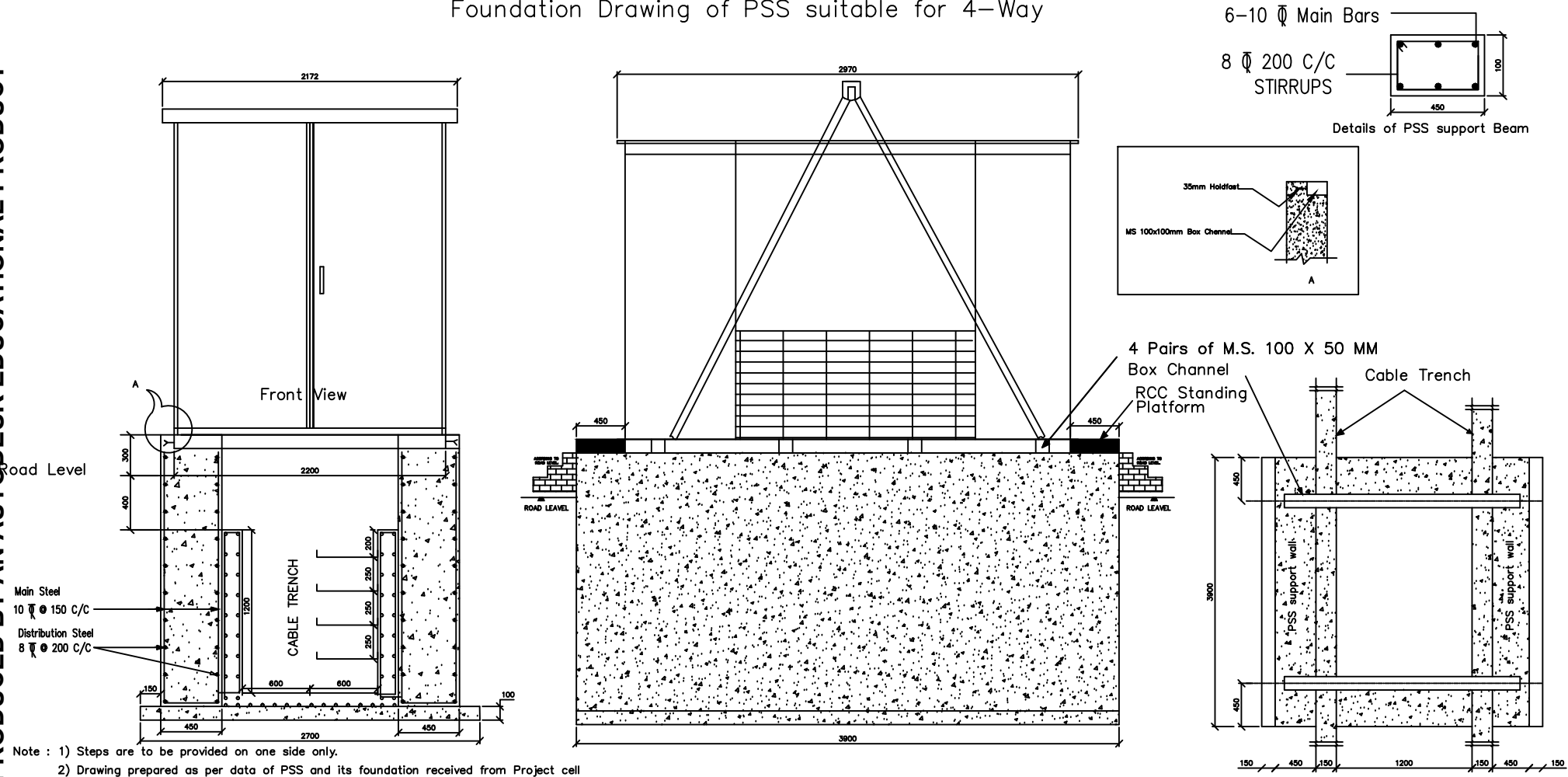
Proposed PSS (3-Way) foundation with R.C.C. wall

Approved By:	Approved By:	Project Title:	Drawing Title: 3-WAY PSS FOUNDATION	Client:
		UNDERGROUNDING OF HT/LT NETWORK AT BOL GIDC (SANAND-II)	Sheet No.: 01	UGVCL, MEHSANA
			Scale: 1:100	
			Rev:	

Foundation Drawing of PSS suitable for 4-Way

PRODUCED BY AN AUTODESK EDUCATIONAL PRODUCT

PRODUCED BY AN AUTODESK EDUCATIONAL PRODUCT

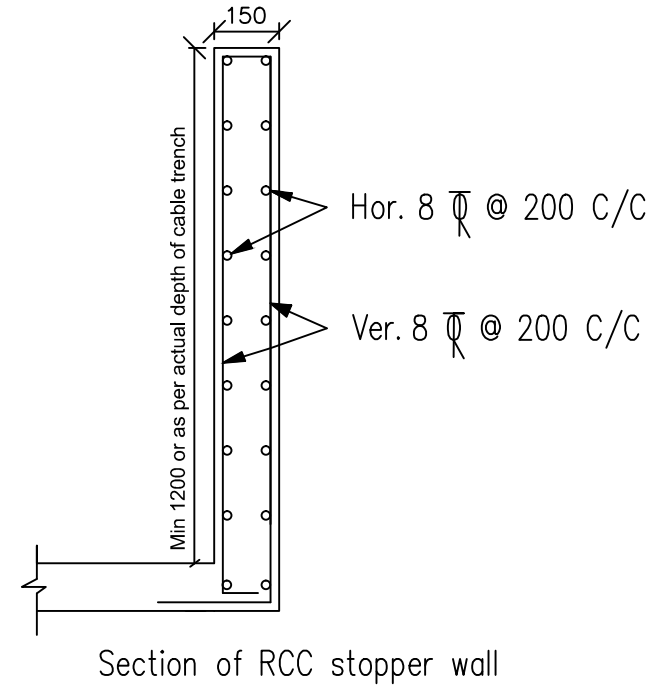
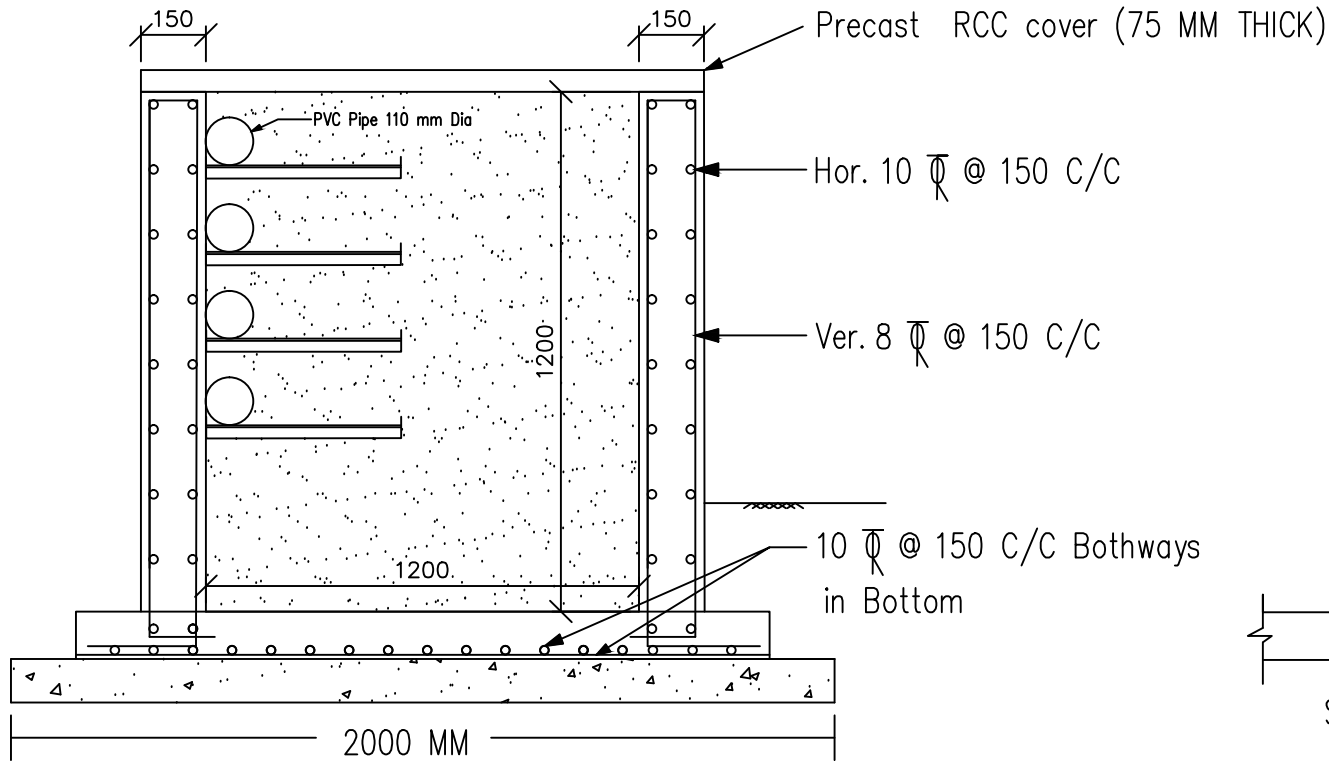


Note : 1) Steps are to be provided on one side only.  
 2) Drawing prepared as per data of PSS and its foundation received from Project cell

Proposed PSS (4-Way) foundation with R.C.C. wall


Approved By:	Approved By:	Project Title:	Drawing No.:	Client:
		UNDERGROUNDING OF HT/LT NETWORK AT BOL GIDC (SANAND-II)	4-WAY PSS FOUNDATION	UGVCL, MEHSANA
			Scale: 1:10	
			Drawn by: K.S.	
			Checked by:	
			Date:	

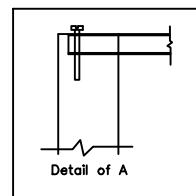
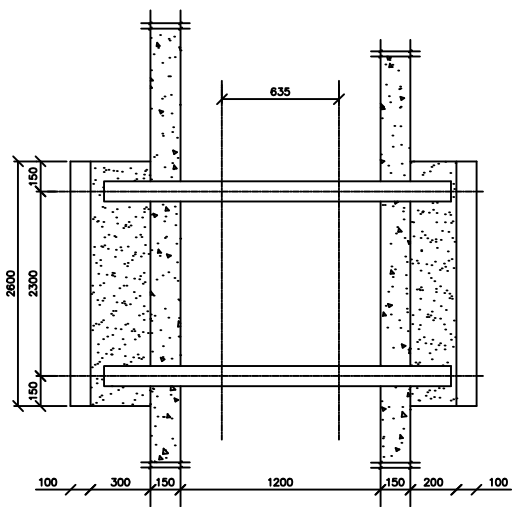
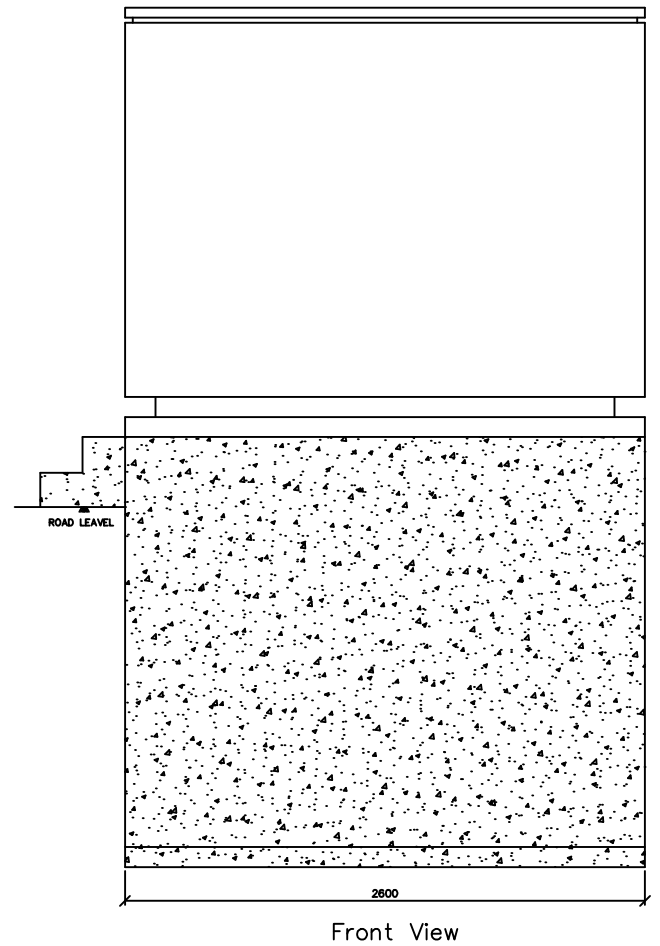
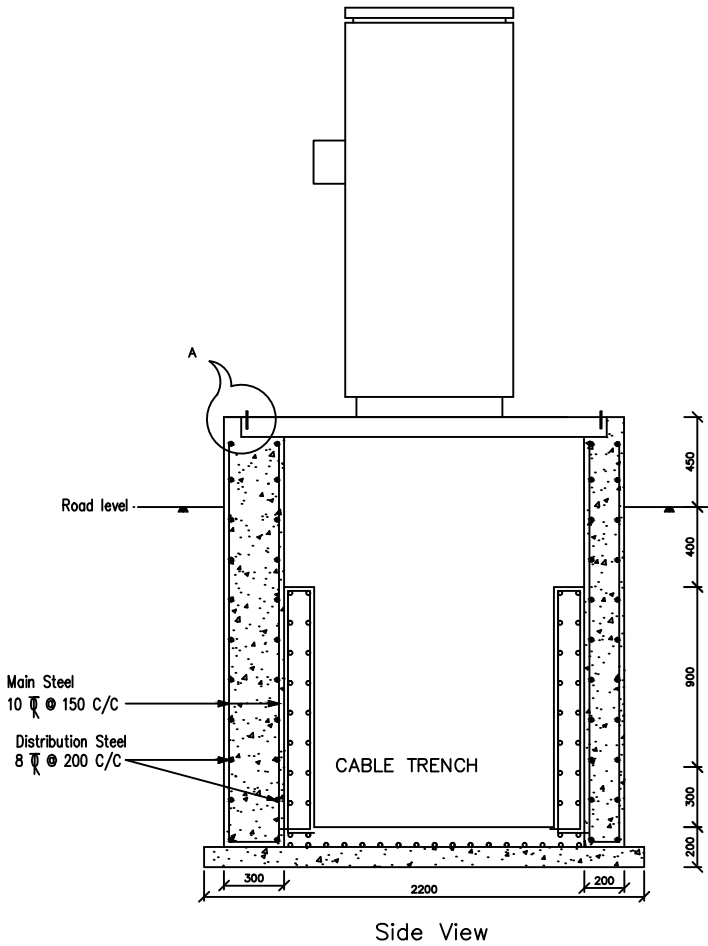
PRODUCED BY AN AUTODESK EDUCATIONAL PRODUCT



PRODUCED BY AN AUTODESK EDUCATIONAL PRODUCT

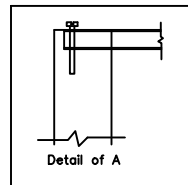
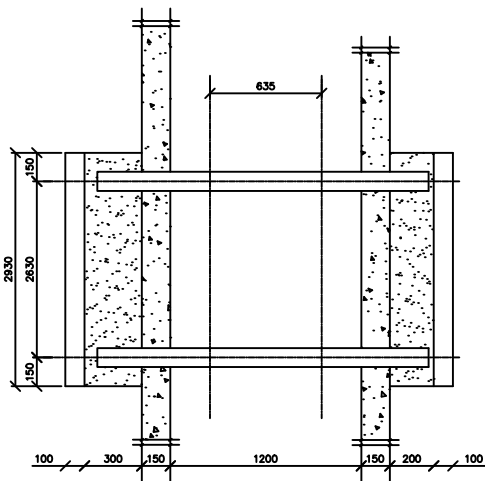
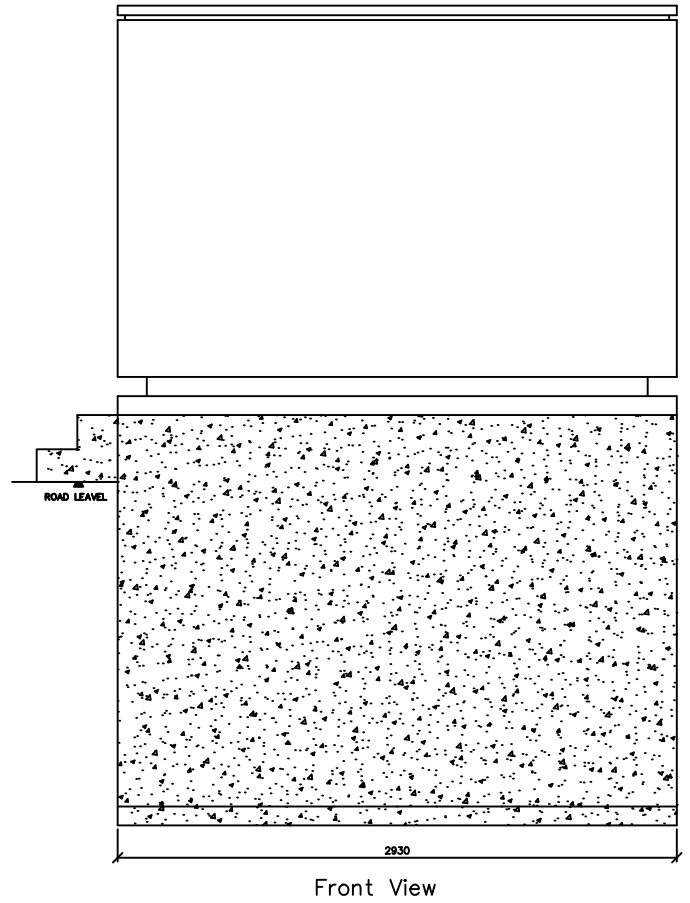
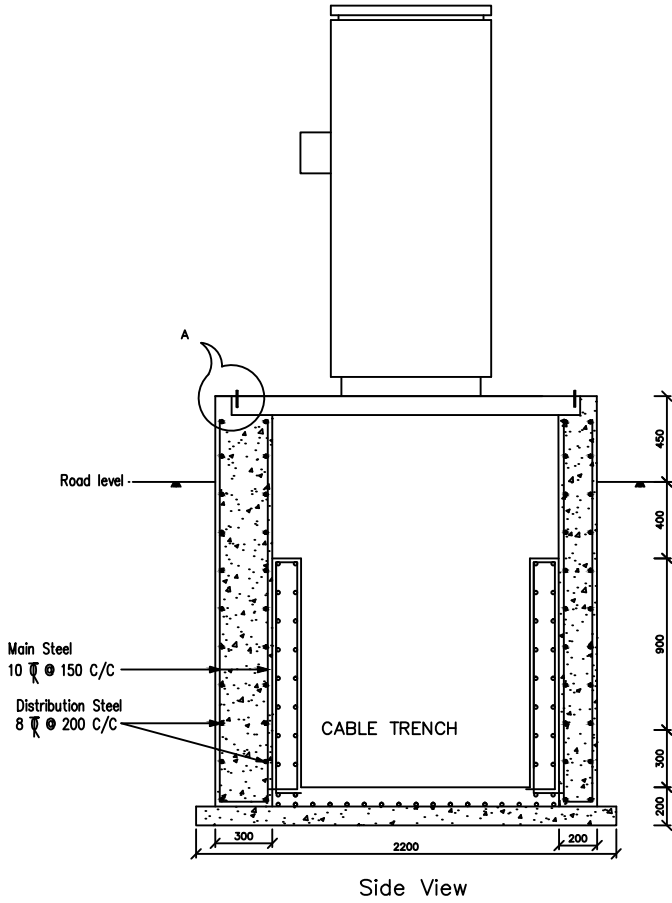
DRAWING OF R.C.C. STOPPER WALL AT END OF CABLE TRENCH

<b>UTTAR GUJARAT VIJ CO LTD</b> R&C OFFICE, MEHSANA				
<b>Details of R.C.C. stopper wall at end of cable trench for U/G power distribution network at BOL GIDC (Sanand-I)</b>				
<b>Drawing traced from GETCO drawing no. 4S-162/CBLT-018 and GETCO/C/48-001/P-03 and prepared by Civil section</b>				
DRAWN:	CHECKED:	APPD:	 SIZE: A4	
SCALE: Not to Scale	DATE:	DRG. NO: UGVCL/R&D-PP/TRENCH/002		



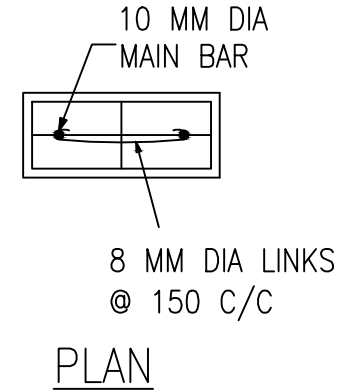
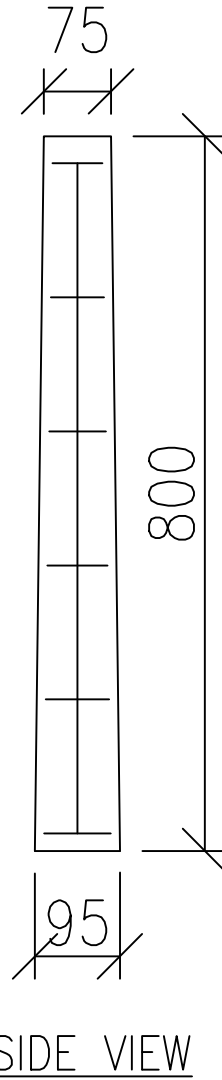
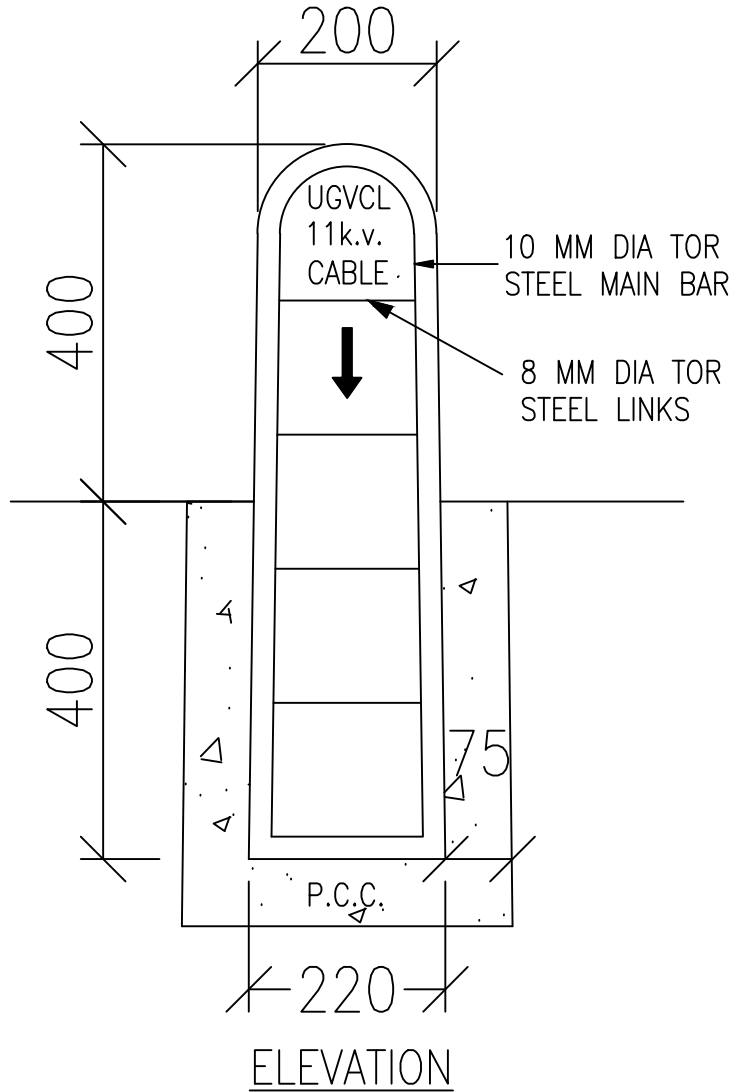
Drawing of RMU mounting plinth on trench  
(For 3-Way RMU)  
At BOL GIDC (Sanand-II)

UTTAR GUJARAT VIJ COMPANY LIMITED
RMU MOUNTING PLINTH ON TRENCH
DRAWING NO. : UGVCL/R&D-PP/3 WAY RMU (R1)
DRG. PREPARED BY CIVIL SECTION
DRAWN BY :
CHECKED BY :
APPROVED BY :



Drawing of RMU mounting plinth on trench  
(For 4-Way RMU)  
At BOL GIDC (Sanand-II)

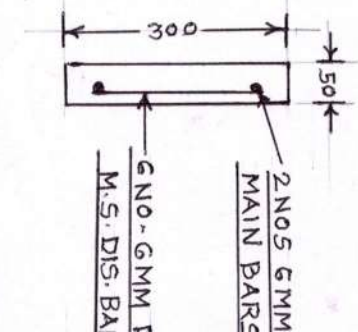
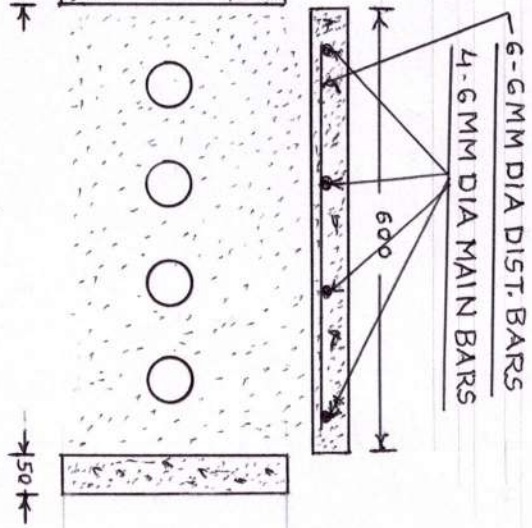
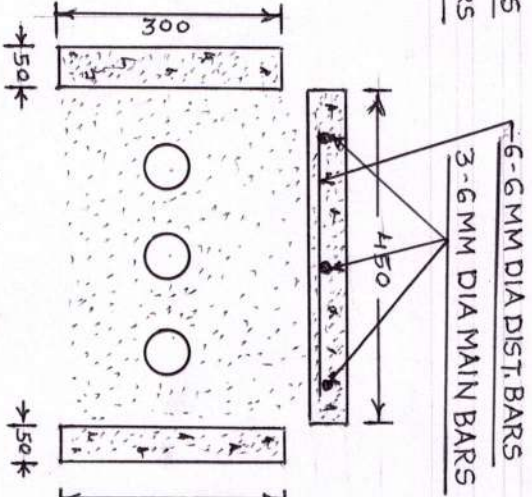
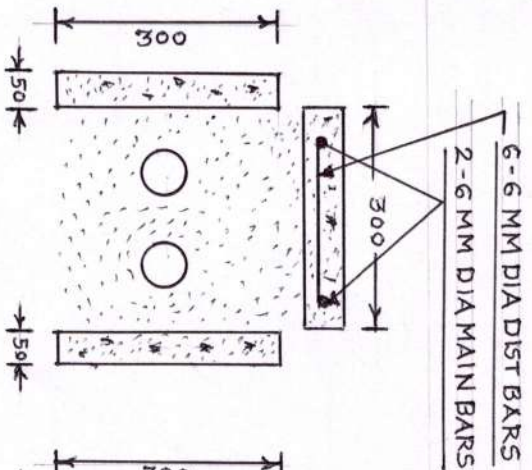
UTTAR GUJARAT VIJ COMPANY LIMITED
RMU MOUNTING PLINTH ON TRENCH
DRAWING NO. : UGVCL/R&D-PP/4 WAY RMU (R1)
DRG. PREPARED BY CIVIL SECTION
DRAWN BY :
CHECKED BY :
APPROVED BY :



DETAILS OF PRECAST R.C.C. BLOCK CABLE  
ROUTE MARKER FOR BOL GIDC (Sanand-II)

UTTAR GUJARAT VIJ COMPANY LIMITE
PRECAST RCC BLOCK CABLE ROUTE MARKER
DRAWING NO. : UGVCL/R&D-PP/RM/001
DRG. PREPARED BY CIVIL SECTION
DRAWN BY :
CHECKED BY :
APPROVED BY :





LENGTH OF EACH BLOCK - 1000MM.

UTAR GUJARAT VID COMPANY LIMITED  
PRE CAST CABLE TRENCH.

DRG NO: UGVCCLRED-PP/PCC/T/001

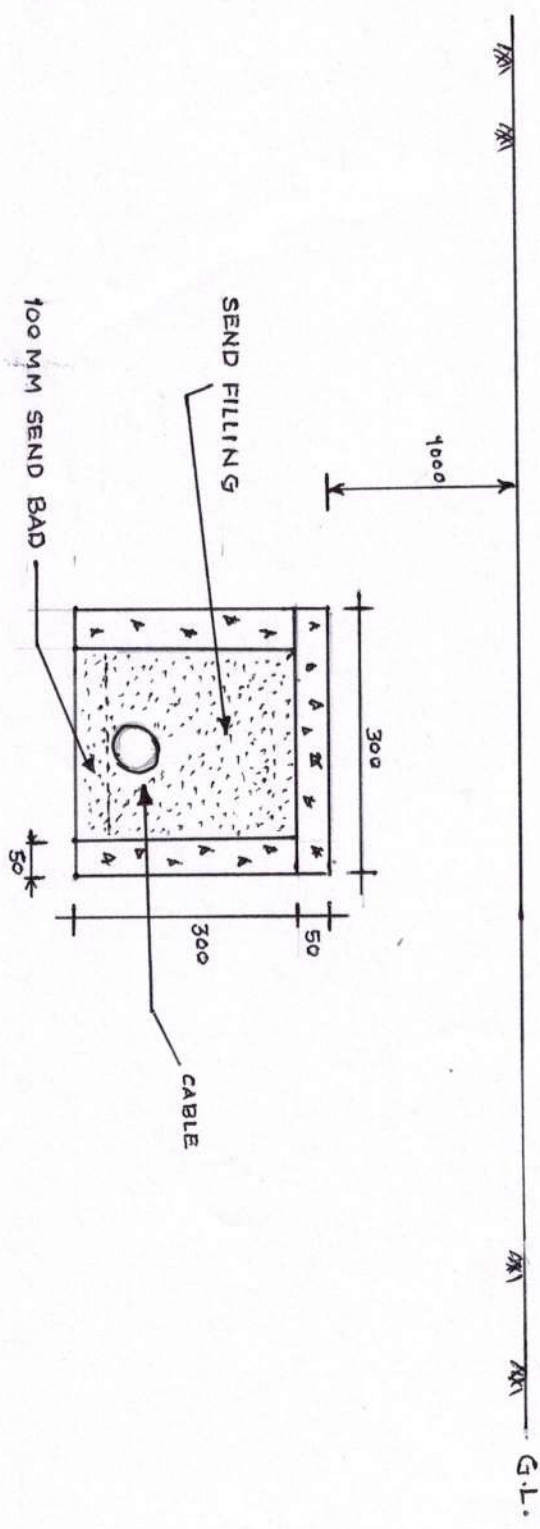
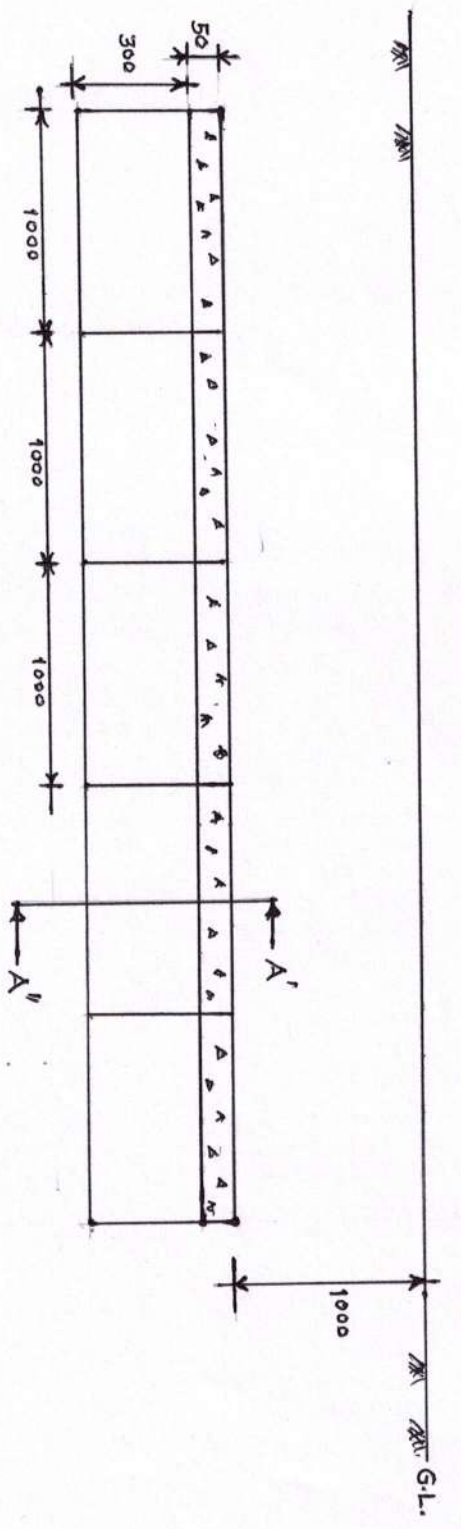
CHECKED BY:

APPROVED BY:

DRAWN BY:

A-S

**R. Bipat**  
Engineer  
UGVCL, R&C Office  
Mehsana.



DRG NO. UGVCL/RED-PP/PCT  
 MINI PRE CAST CABLE TRENCH

DRN BY	A.S.JANI	UGVCL R.O.
CHD BY	MEHSANA	
APPROV BY	<i>[Signature]</i> Executive Engineer	

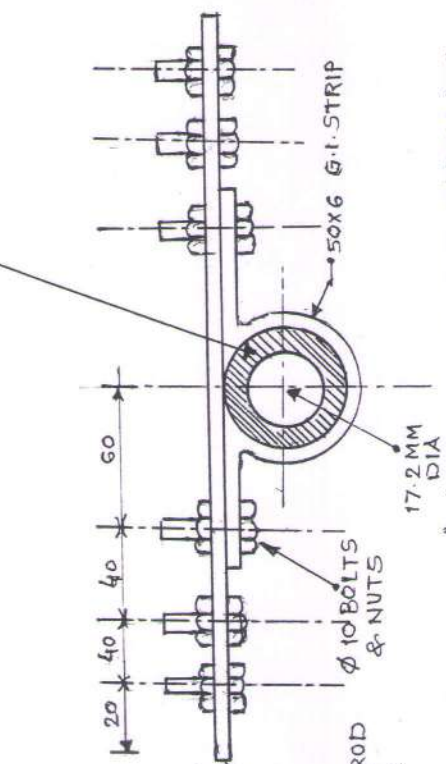
UGVCL, R&C Office  
 Mehsana.

RCC CHAMBER CANEL

50 X 6 MM G.I. STRIP CLAMP WITH 3 NOS. 12 X 25 BOLTS & NUTS ON BOTH SIDE.

(1 NO. ON BOTH SIDE FOR CLAMPING & 2 NOS FOR EXTERNAL CONNECTION BY USING 50 X 6 MM. G.I. STRIP.

AFTER FIXING SURFACE SHOULD COVERED WITH BITUMIN OR GREASE



DETAIL "A" FOR CU-BONDED EARTH ROD FOR PIPE Electrode it may be different

RCC CHAMBER

50 X 6 MM G.I. STRIP CLAMP WITH 3 NOS. 12 X 25 BOLTS & NUTS ON BOTH SIDE.

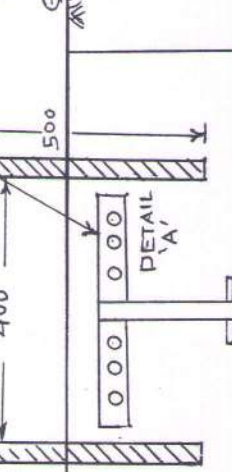
(1 NO. ON BOTH SIDE FOR CLAMPING & 2 NOS FOR EXTERNAL CONNECTION BY USING 50 X 6 MM. G.I. STRIP.

COPPER BONDED EARTH ROD (17.2 MM X 3 MTR) OR PIPE ELECTRODE.

GROUND ENHANCING MATERIAL

100 MM X 3 MTR. BORE

EXISTING NORMA SOIL



Earth Pit Installation Procedure for Normal Soil for Cu-bonded Earth Rod. (Dia of pipe hole for other cases may be different.)

1. Auger a 100 mm dia hole to depth upto 2850 mm.
2. Drop the earth rod down the hole with lower end centered and driven in 150 mm.
3. Fill the hole using ground Enhancement Material around the rod.
4. Allow it to dry to enable to compound to set before fixing clamp & connections.

UTTAR GUJRAT VIJ CO. LTD

CARBON EARTHING

DRG. NO. UGVCL/R&D-PP/EARTHING/001

CHECKED BY

APPROVED BY

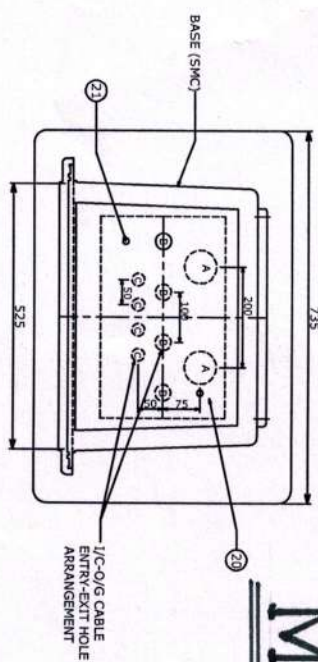
DRAWN BY

*[Signature]*  
A.S. JANI

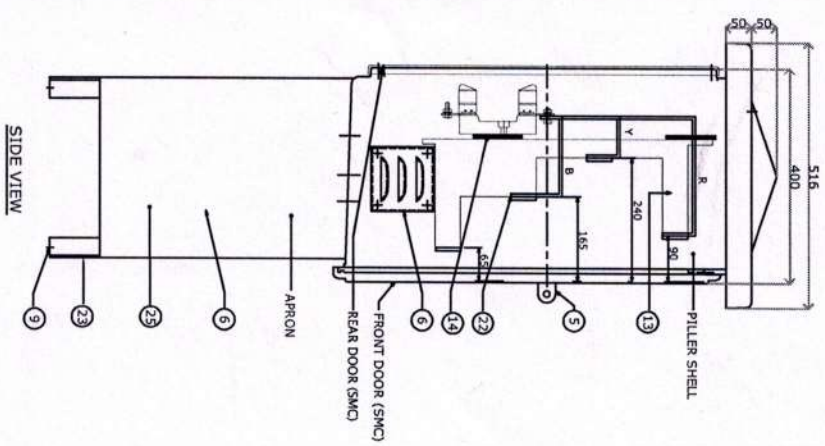
JR. D. MAN

# MSP

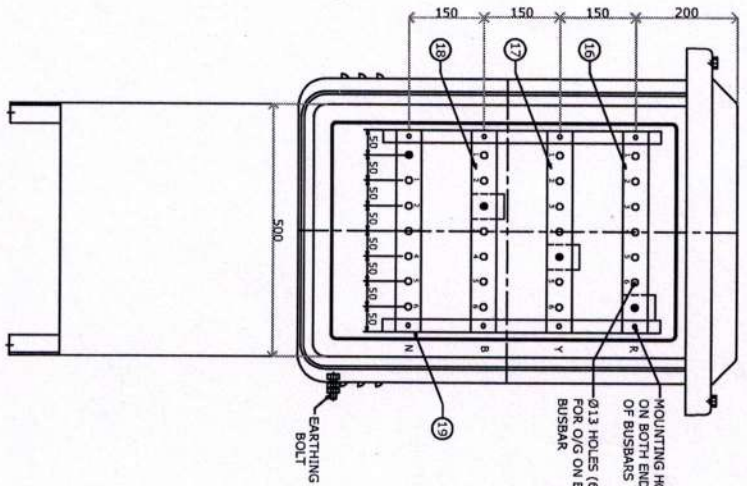
DETAILS OF I/C-O/G CABLE ENTRY-EXIT HOLE ARRANGEMENT  
 A=065, 2 NOS. @200 C/C  
 B= 032, 4 NOS. @100 C/C  
 C=025, 4 NOS. @50 C/C



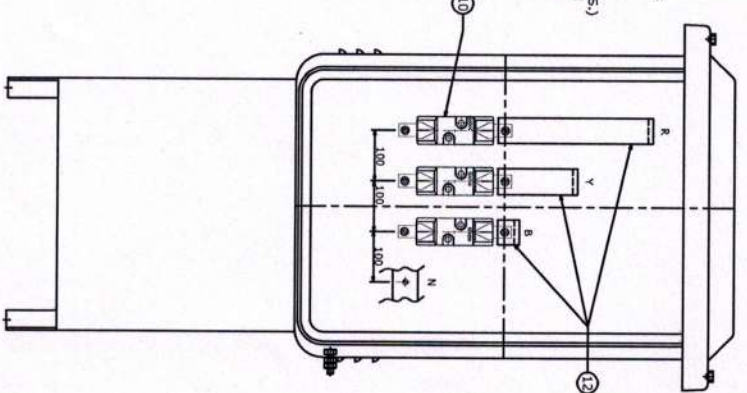
TOP VIEW



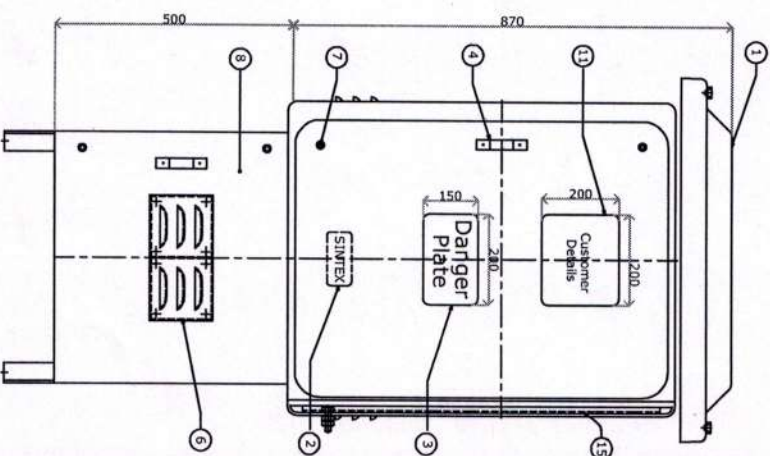
SIDE VIEW



DOOR OPEN-FRONT VIEW



DOOR OPEN-BACK VIEW

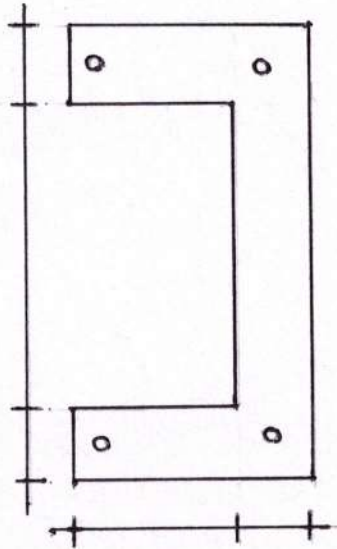


FRONT VIEW

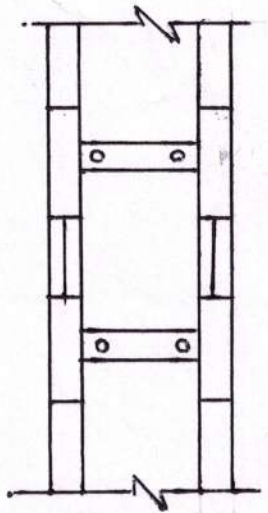
- NOTES :-**
- (1) ALL BOLTS, NUTS TO BE PROVIDED WITH PLAIN WASHER OF SUITABLE SIZE.
  - (2) PILLAR SHELL SHALL BE MOULDED OF SMC & APRON FRAME WORK SHALL BE FABRICATED USING FRP PULTRUDED SECTIONS & SMC SHEET.
  - (3) COLOUR OF PILLER BOX SHALL BE GREY & THAT OF APRON SHALL BE BLACK.
  - (4) CLEARANCES :- BETWEEN BUS BARS - 85 mm (MIN.)  
 BETWEEN BUS BAR & ENCLOSURE WALL - 50 mm (MIN.)

UTTAR GUJARAT VIJ COMPANY LTD  
 MINI SECTION PILLER  
 DRG.NO.UGVCL/R&D-PP/MSP-001  
 CHECKED BY  
 APPROVED BY  
 DRAWN BY  
 A. S. JAIN  
 R. B. Patil  
 SR. DESIGNER

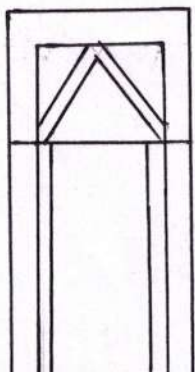
Mehsana.



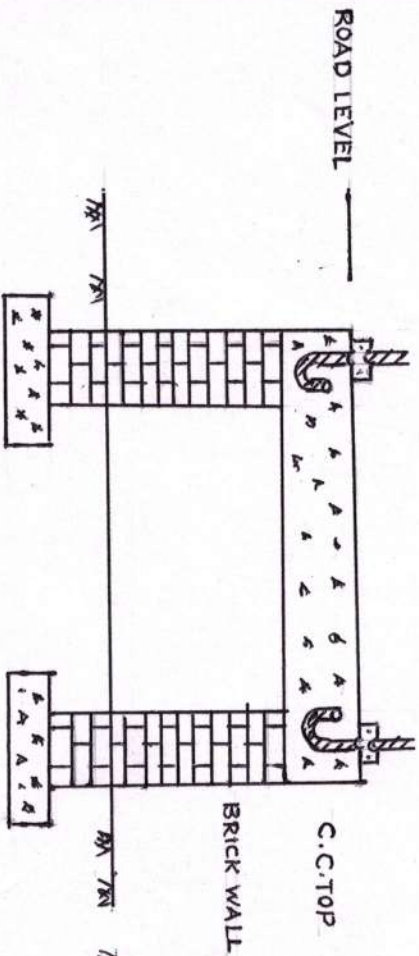
TOP VIEW



TOP VIEW

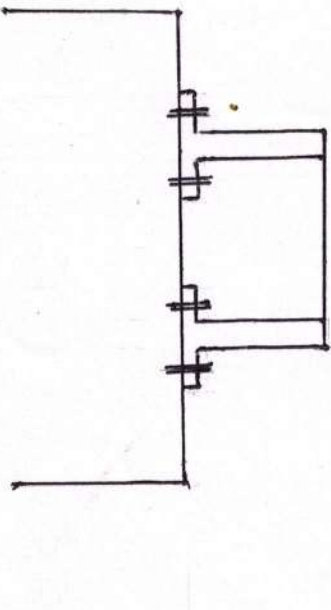


SIDE VIEW



FRONT VIEW

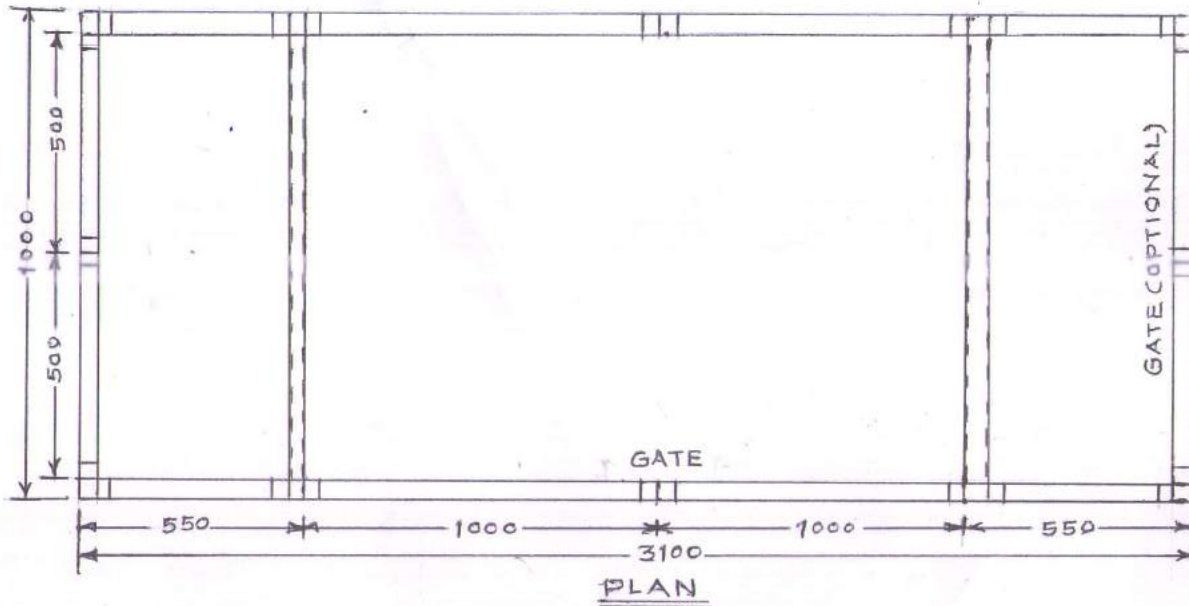
M S P INSTOLATION OF GROUND



FRONT VIEW

M.S.P. INSTOLATION OF TRENCH

M S P PLINTH	
UGVCL R.D-PP/MSP PLINTH/002	
DRN BY	A.S.JANI
CHD BY	
APPROV BY	MEHSANA
	RDG.NB.
	12/11/2011
	UGVCL, R.O. Office,
	Mehsana.



UGVCL R&D-PP/FENCING/FRP/001

FRP FENCING SYSTEM FOR DTS

DRN BY	A. S. JANI	UGVCL R.O.
CHE BY		OFFI. MEHSANA
APPROV BY	E.E.	DRG. NO. DT. 12.14

R. B. Patel  
Executive Engineer (R&D)  
UGVCL, R&C Office,  
Mehsana.

