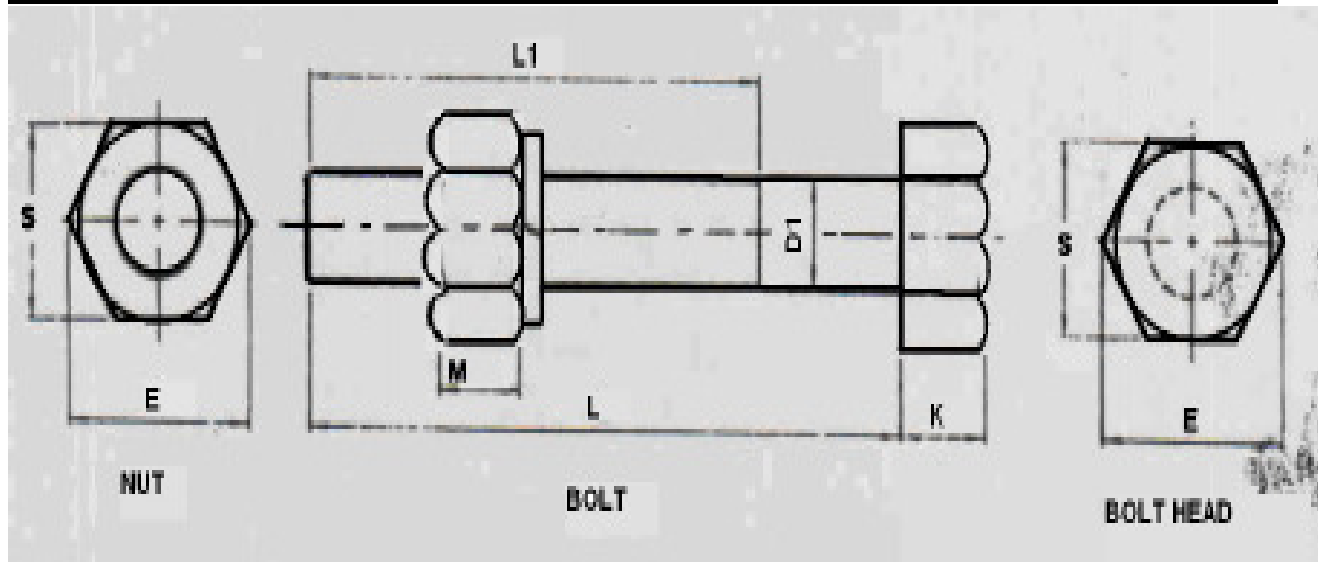


# DRAWING FOR G.I. NUT-BOLT FOR L.T. SHACKLE INSULATOR



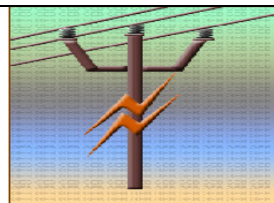
DESCRIPTION & SIZE	MATERIAL	SURFACE TREATMENT
L.T. SHACKLE BOLT M12	MILD STEEL	HOT DIP GALVENISED
HEXAGONAL NUT M12	MILD STEEL	HOT DIP GALVENISED
SPRING WASHER TYPE 'B' SUITABLE FOR 'M12' BOLT (3mm thick $\pm 0.2$ ) AS PER I.S. 3063	SPRING STEEL	ELECTROPLATED

## DIMENSION:

	L	L1	D1	S	E	K	M
NORMAL	115	65	12	--	--	7.5	--
MAX.	118	66.75	12.7	18	--	7.95	12.2
MIN.	113.25	63.25	11.3	17.57	19.85	7.05	10.4

## Applicable Standard:

- ❖ I.S. 7935/1975 Specification for insulator fitting up to and including 1000 Volt.
- ❖ I.S. 2633/1986 Specification for Hot Dip Galvanizing.
- ❖ I.S. 1363/Part-I & III / 1984 Specification of Hexagonal Nut & Bolt.



**U  
G  
V  
C  
L**

**UTTAR GUJARAT VIJ COMPANY LTD., MEHSANA**

**DRAWING FOR G.I. NUTS & BOLT FOR L.T. SHACKLE INSULATOR**

**DRG. NO. UGVCL/SP/GI Nut-Bolt-1**