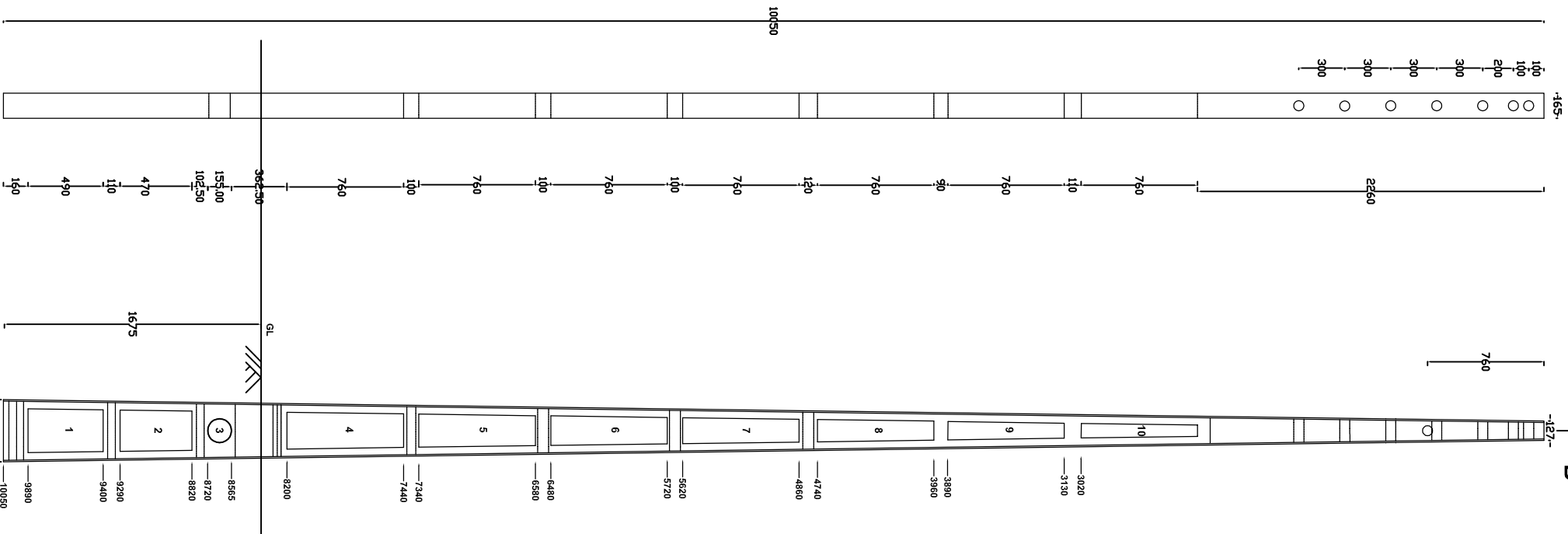


FOR 6MM Ø M.S. BAR STIRRUPS



SEC.: 'A-A'

FRONT ELEVATION



SEC.: 'B-B'

FRONT ELEVATION

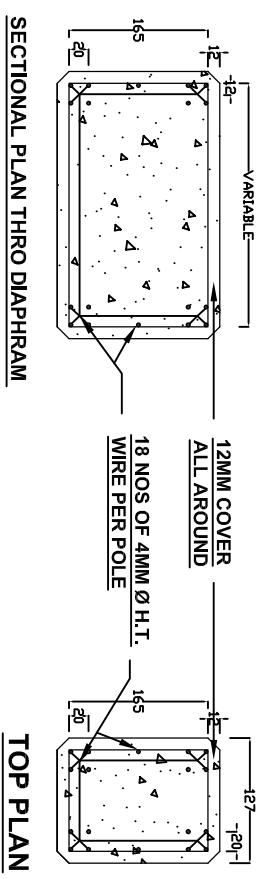
ALL DIMENSIONS ARE AS PER SECTION 'A-A'

SR. NO.	NO OF RING	RING SIZE FROM BOTTOM (APPROX)	WINDOW SIZE FROM BOTTOM
1.	3 NOS	390X145	1. 270 X490 2. 280 X470
2.	2 NOS	355X145	2. 250 X470
3.	3 NOS	315X145	3. 155MM DIA.
4.	3 NOS	290X145	4. 220 X760 5. 230 X760
5.	2 NOS	270X145	5. 190 X760 6. 210 X760
6.	2 NOS	250X145	6. 160 X760 7. 180 X760
7.	2 NOS	200X145	7. 135 X760 8. 155 X760
8.	2 NOS	170X145	8. 110 X760 9. 130 X760
9.	3 NOS	140X145	9. 85 X760 10. 105 X760
10.	5 NOS	110X145	10. 65 X760 11. 85 X760

27 NOS.

NOTE:-

1. THE DIMENSIONS SHOWN ARE IN MM.
2. ALL STIRRUPS SHALL BE WELDED AT LAPS.
3. APPROXIMATE WEIGHT OF POLE 650 KG.
4. BOTTOM & TOP OF PSC POLE SHALL BE PAINTED WITH ANTICORROSIVE BLACK EPOXY BASE BITUMINOUS PAINTS.
5. 6 MM Ø STIRRUPS 27 NOS.
6. TENSION WIRE -4MM H.T. STEEL -18NOS.
7. CONCRETE GRADE -M-45.
8. WORKING LOAD 270 KG.
9. FACTOR OF SAFETY - 2.5
10. 4MM DIA. H.T. STEEL 12 NOS SPRIAL.
11. WEB THICKNESS 65MM.



TOP PLAN

**UTTAR GUJARAT VIJ COMPANY LTD.**

Prestressed Concrete Pole - 10 mtr / 270 kgs showing detailed dimensions for Ready Made Pole Supply

Regenerated from GEB dry no. PKM/PSC/POLE/01/R0

DRAWN:	CHECKED:	APPD:	DRG. NO.:	SHEET:
SCALE:	DATE:	DATE:	UGVCL/PSC Pole/10 mtr/01	1 OF 1
N. T. S.	18-05-2010			R0