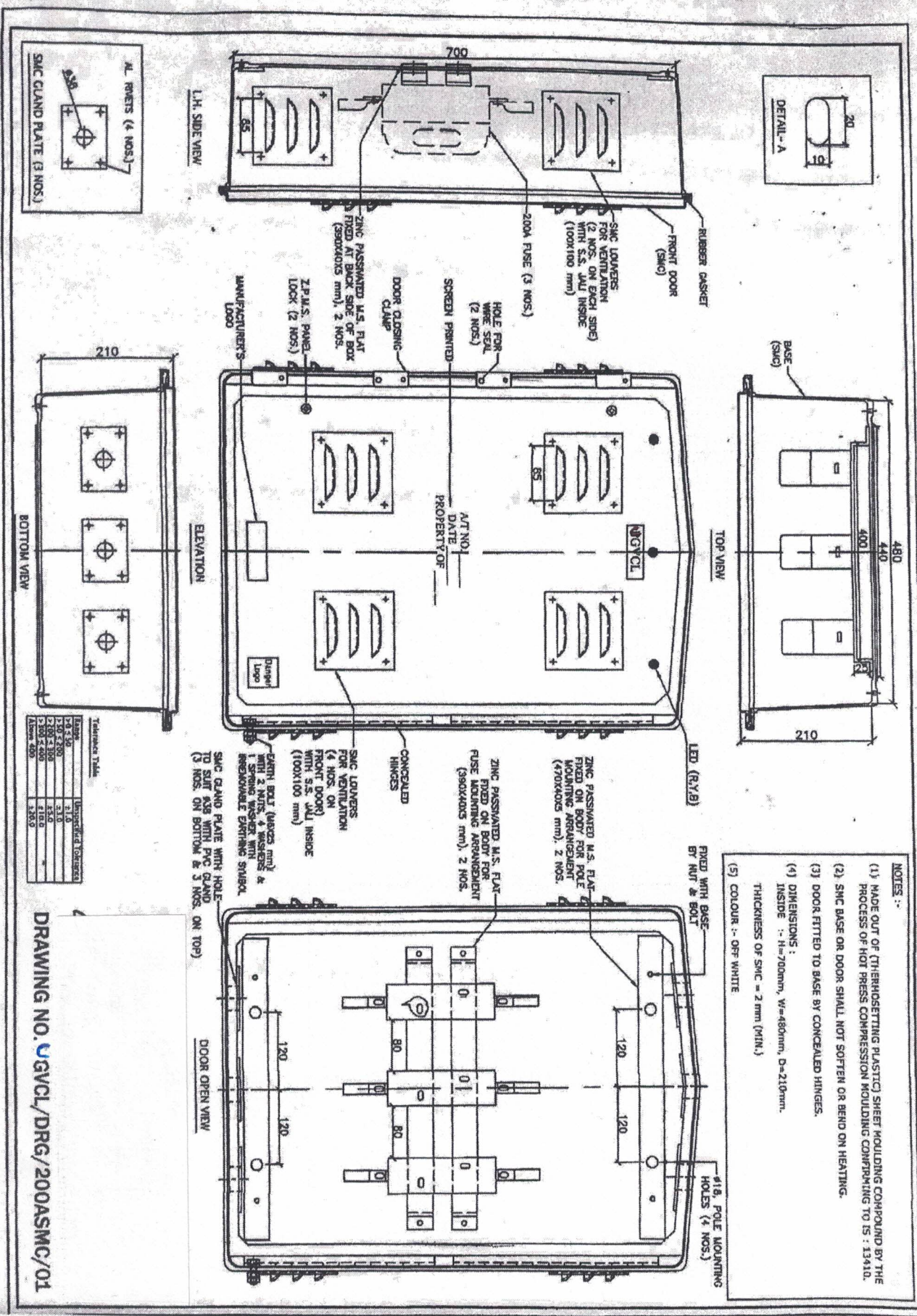


DRAWING OF SMC FUSE BOX WITH 200 AMP. VERTICAL FUSE TENDER NO.



- NOTES :-
- (1) MADE OUT OF (THERMOSETTING PLASTIC) SHEET INCLUDING COMPOUND BY THE PROCESS OF HOT PRESS COMPRESSION MouldING COMPRISING TO IS : 15610.
 - (2) SMC BASE OR DOOR SHALL NOT SOFTEN OR BEND ON HEATING.
 - (3) DOOR FITTED TO BASE BY CONCEALED HINGES.
 - (4) DIMENSIONS :
INSIDE :- H=700mm, W=480mm, D=210mm.
THICKNESS OF SMC = 2 mm (MIN.)
 - (5) COLOUR :- OFF WHITE

Tolerance Table

Range	Unspecified Tolerances
0 - 10	± 0.1
10 - 30	± 0.15
30 - 100	± 0.2
100 - 300	± 0.3
300 - 1000	± 0.5
1000 - 3000	± 0.7
3000 - 10000	± 1.0

DRAWING NO. UGVCL/DRG/200ASMC/01