

NOTE:

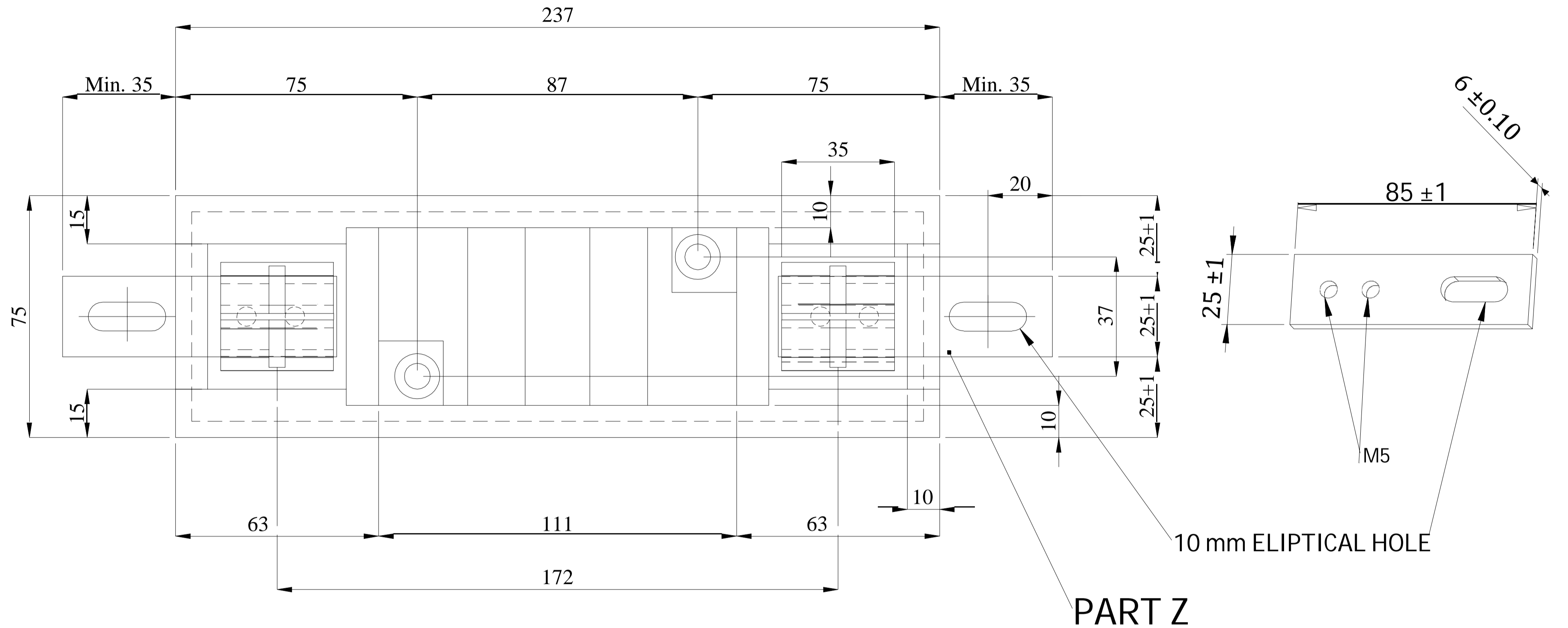
1. WORD 'PGVCL' AND TRADE MARK OF SUPPLIER SHALL BE EMBOSSED BOTH ON FUZE CARRIER AND BASE
2. GENERAL TOLERANCE  $\pm 5\%$  ON LENGTH, WIDTH AND HEIGHT OF THE BODY
3. CENTRE DISTANCE BETWEEN HOLES OF METAL PARTS  
UP TO 50 mm -  $\pm 1$  mm  
ABOVE 50 mm-  $\pm 2$  mm
4. WALL THICKNESS +5 mm TOLERANCE SHALL BE ALLOWED.  
NEGATIVE TOLERANCE NOT ALLOWED.
5. TOLERANCE  $\pm 5\%$  IN CERAMIC PARTS
6. ALL DIMENSIONS ARE IN mm

DISCOM Name:-UTTAR GUJARAT VIJ COMPANY LIMITED

GENERAL ARRANGEMENT AND COMPONENTS  
DRG. FOR 200 Amp., 415 VOLTS KIT-KAT FUSE

DRG. NO.: -UGVCL/KIT-KAT/200A/13

SHEET 1 OF 9



NOTE:

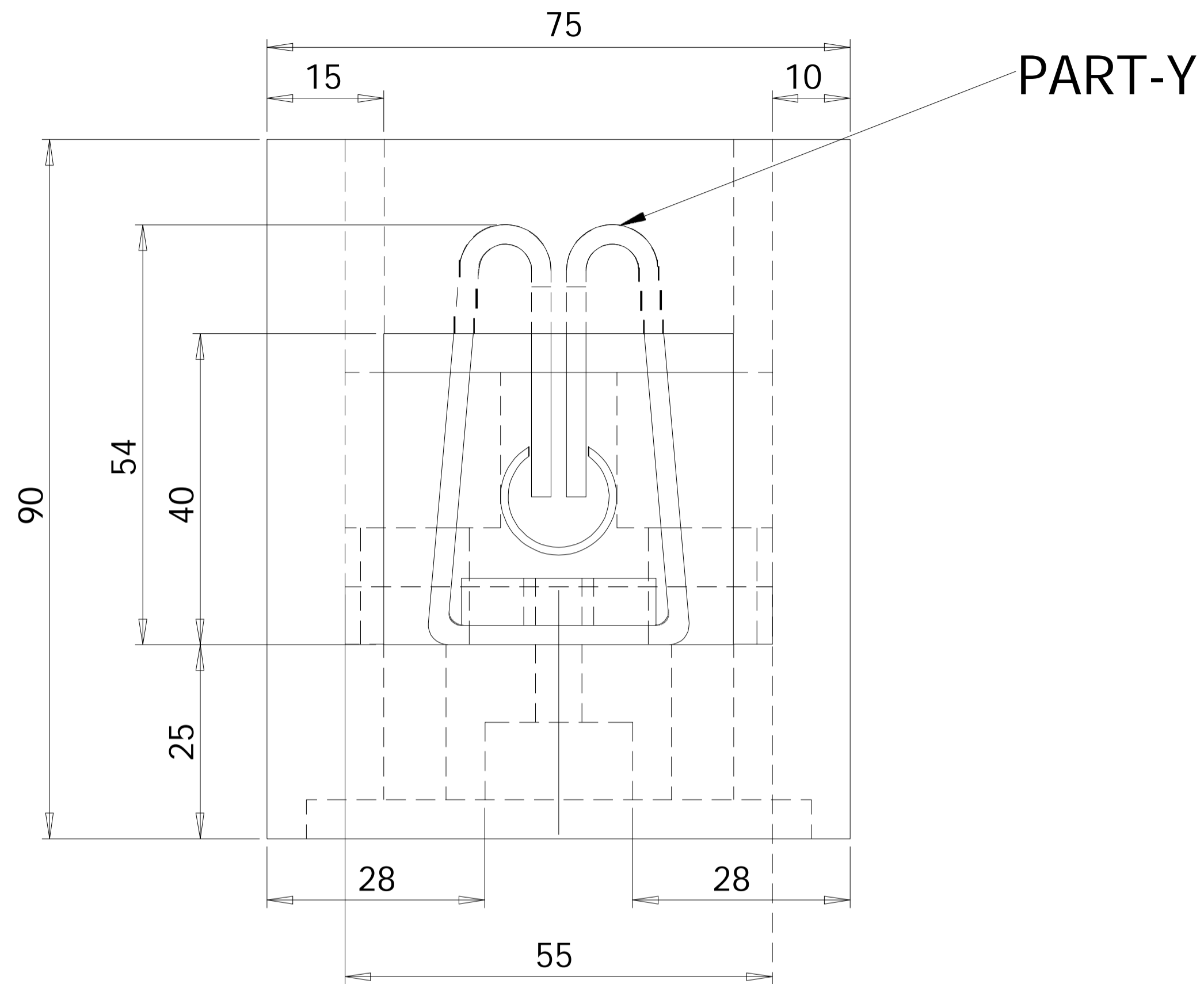
1. WORD 'PGVCL' AND TRADE MARK OF SUPPLIER SHALL BE EMBOSSED BOTH ON FUDE CARRIER AND BASE
2. GENERAL TOLERANCE  $\pm 5\%$  ON LENGTH, WIDTH AND HEIGHT OF THE BODY
3. CENTRE DISTANCE BETWEEN HOLES OF METAL PARTS  
UP TO 50 mm -  $\pm 1$  mm  
ABOVE 50 mm-  $\pm 2$  mm
4. WALL THICKNESS +5 mm TOLERANCE SHALL BE ALLOWED. NEGATIVE TOLERANCE NOT ALLOWED.
5. TOLERANCE  $\pm 5\%$  IN CERAMIC PARTS
6. ALL DIMENSIONS ARE IN mm

DISCOM Name:-UTTAR GUJARAT VIJ COMPANY LIMITED

GENERAL ARRANGEMENT AND COMPONENTS DRG.  
FOR 200Amp., 415 VOLTS KIT-KAT FUSE

DRG. NO.: -UGVCL/KIT-KAT/200A/13

SHEET 2 OF 9



**SIDE VIEW**

**NOTE:**

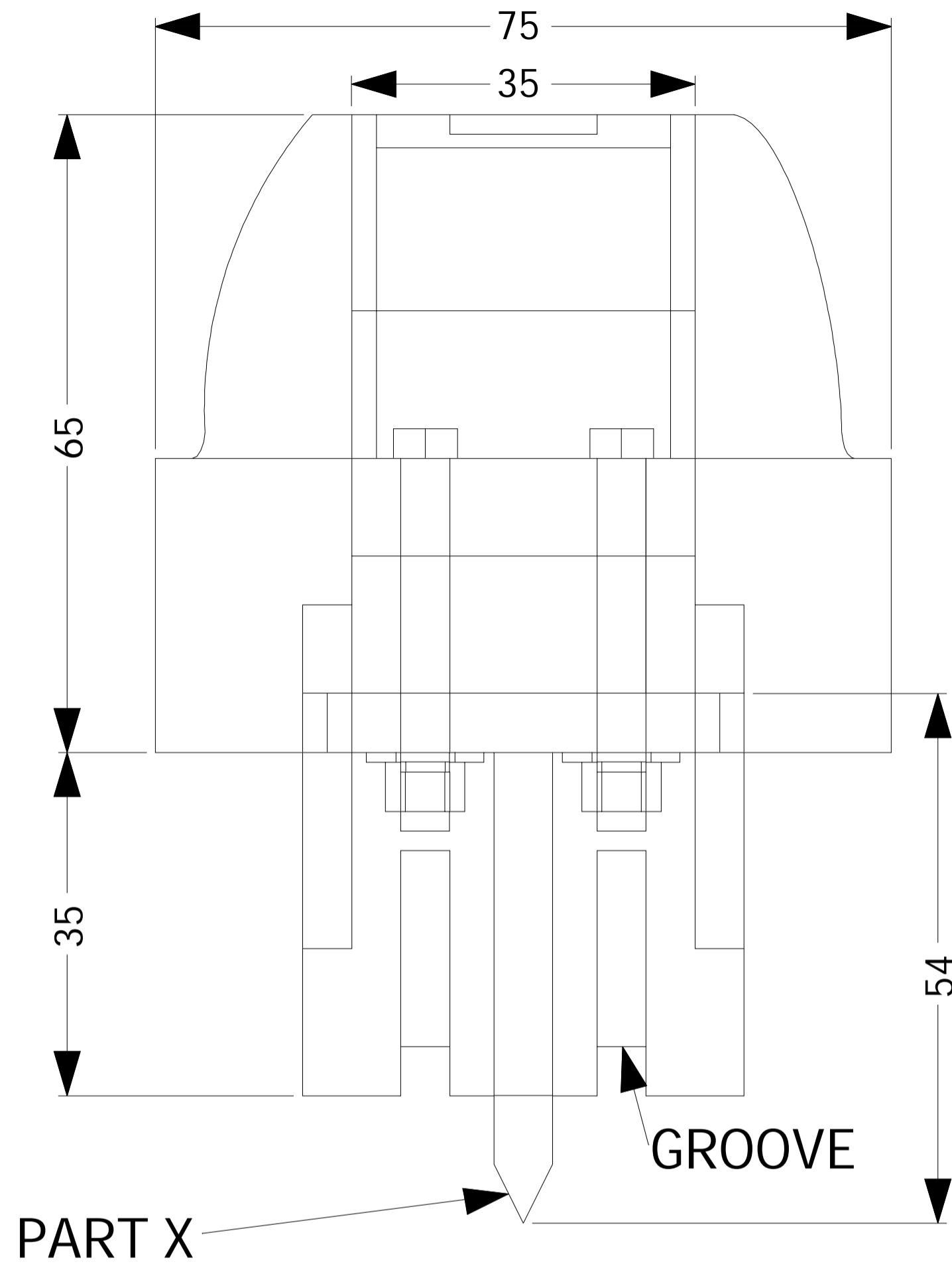
1. WORD 'PGVCL' AND TRADE MARK OF SUPPLIER SHALL BE EMBOSSED BOTH ON FUDE CARRIER AND BASE
2. GENERAL TOLERANCE  $\pm 5\%$  ON LENGTH, WIDTH AND HEIGHT OF THE BODY
3. CENTRE DISTANCE BETWEEN HOLES OF METAL PARTS  
UP TO 50 mm -  $\pm 1$  mm  
ABOVE 50 mm-  $\pm 2$  mm
4. WALL THICKNESS +5 mm TOLERANCE SHALL BE ALLOWED. NEGATIVE TOLERANCE NOT ALLOWED.
5. TOLERANCE  $\pm 5\%$  IN CERAMIC PARTS
6. ALL DIMENSIONS ARE IN mm

DISCOM Name:-UTTAR GUJARAT VIJ COMPANY LIMITED

GENERAL ARRANGEMENT AND COMPONENTS DRG.  
FOR 200Amp., 415 VOLTS KIT-KAT FUSE

DRG. NO.: -UGVCL/KIT-KAT/200A/13

SHEET 3 OF 9



**SIDE VIEW**

**NOTE:**

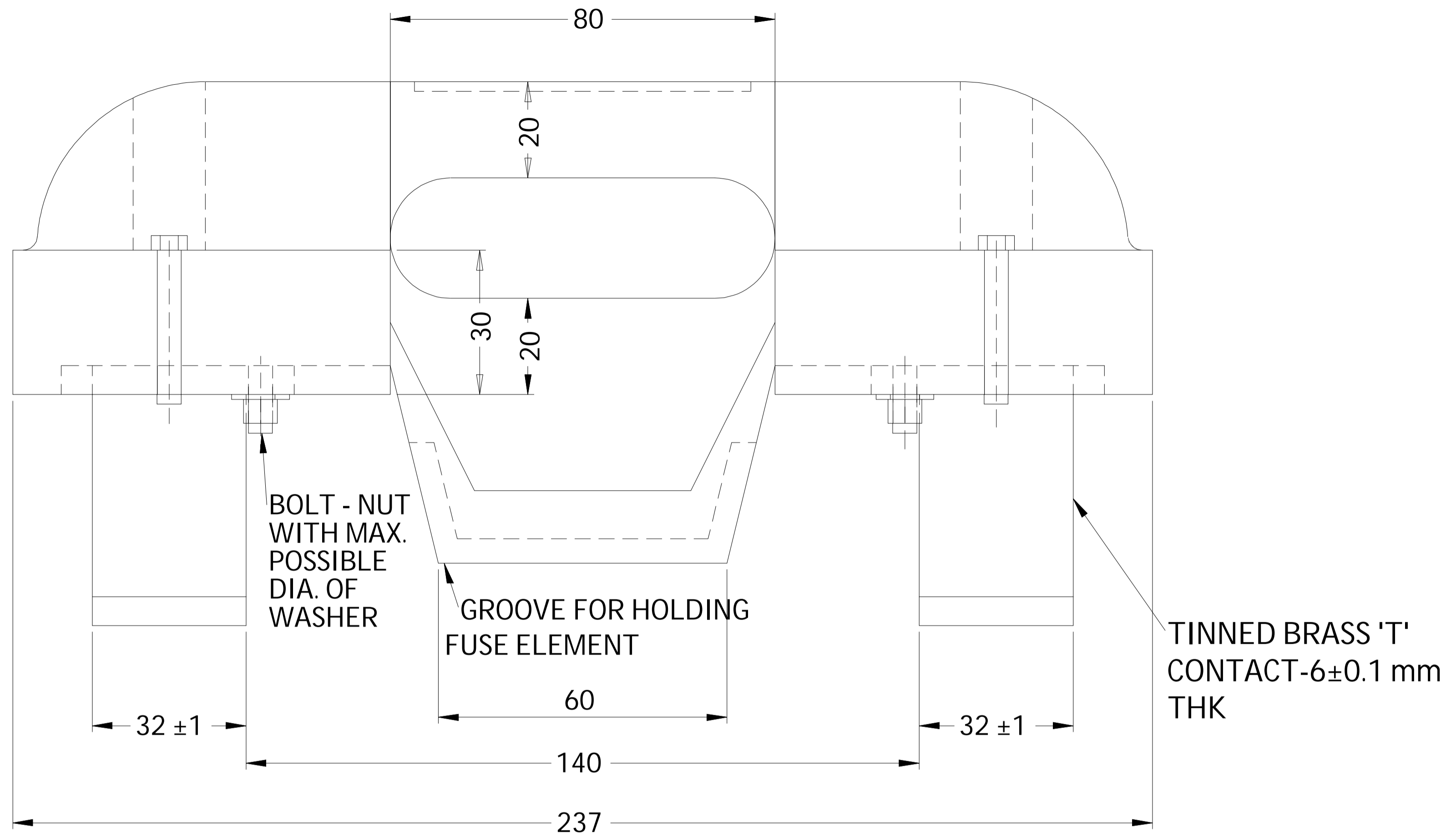
1. WORD 'PGVCL' AND TRADE MARK OF SUPPLIER SHALL BE EMBOSSED BOTH ON FUDE CARRIER AND BASE
2. GENERAL TOLERANCE  $\pm 5\%$  ON LENGTH, WIDTH AND HEIGHT OF THE BODY
3. CENTRE DISTANCE BETWEEN HOLES OF METAL PARTS  
UP TO 50 mm -  $\pm 1$  mm  
ABOVE 50 mm-  $\pm 2$  mm
4. WALL THICKNESS +5 mm TOLERANCE SHALL BE ALLOWED. NEGATIVE TOLERANCE NOT ALLOWED.
5. TOLERANCE  $\pm 5\%$  IN CERAMIC PARTS
6. ALL DIMENSIONS ARE IN mm

DISCOM Name:-UTTAR GUJARAT VIJ COMPANY LIMITED

GENERAL ARRANGEMENT AND COMPONENTS DRG.  
FOR 200Amp., 415 VOLTS KIT-KAT FUSE

DRG. NO.: -UGVCL/KIT-KAT/200A/13

SHEET 4 OF 9



**SIDE VIEW**

**NOTE:**

1. WORD 'PGVCL' AND TRADE MARK OF SUPPLIER SHALL BE EMBOSSED BOTH ON FUDE CARRIER AND BASE
2. GENERAL TOLERANCE  $\pm 5\%$  ON LENGTH, WIDTH AND HEIGHT OF THE BODY
3. CENTRE DISTANCE BETWEEN HOLES OF METAL PARTS  
UP TO 50 mm -  $\pm 1$  mm  
ABOVE 50 mm-  $\pm 2$  mm
4. WALL THICKNESS +5 mm TOLERANCE SHALL BE ALLOWED. NEGATIVE TOLERANCE NOT ALLOWED.
5. TOLERANCE  $\pm 5\%$  IN CERAMIC PARTS
6. ALL DIMENSIONS ARE IN mm

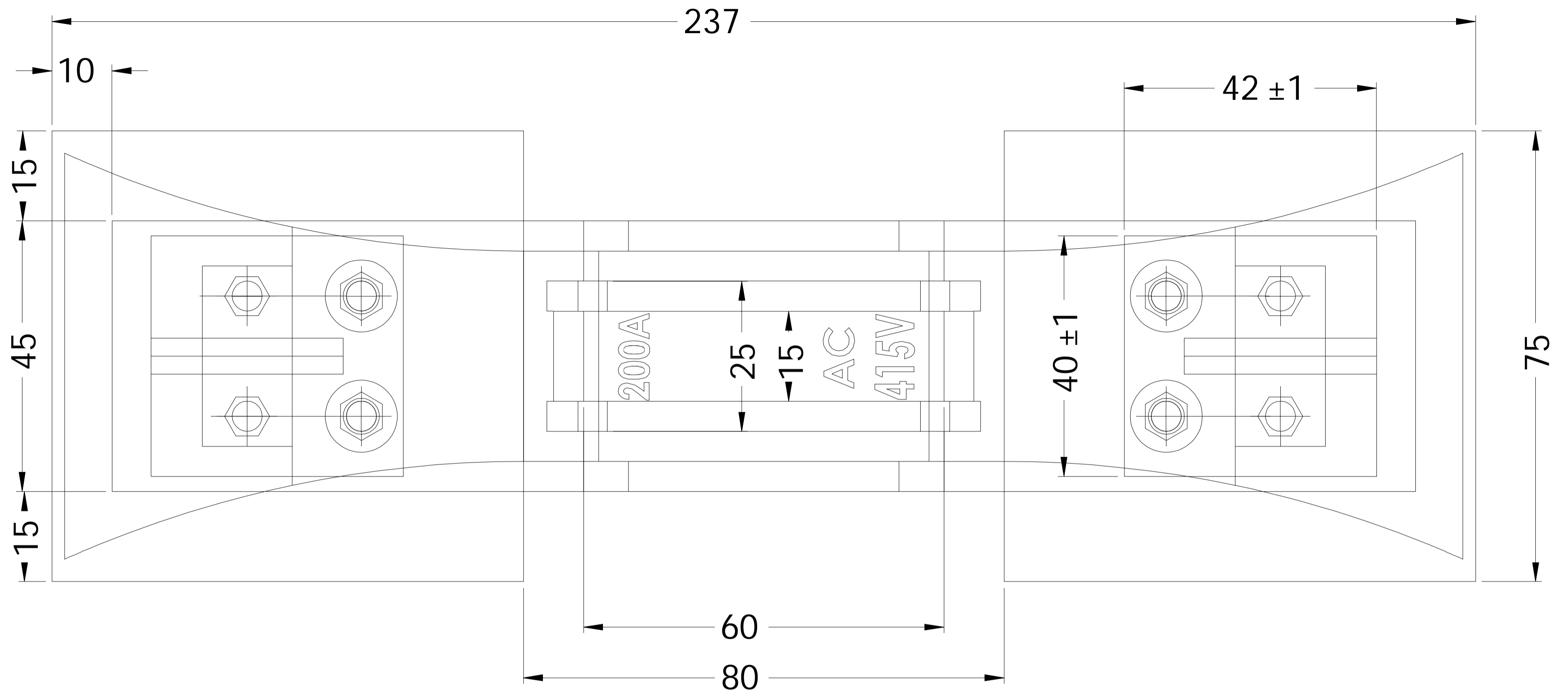
DISCOM Name:-UTTAR GUJARAT VIJ COMPANY LIMITED

GENERAL ARRANGEMENT AND COMPONENTS DRG.  
FOR 200Amp., 415 VOLTS KIT-KAT FUSE

DRG. NO.: -UGVCL/KIT-KAT/200A/13

SHEET 5 OF 9





TOP VIEW OF CARRIER

NOTE:

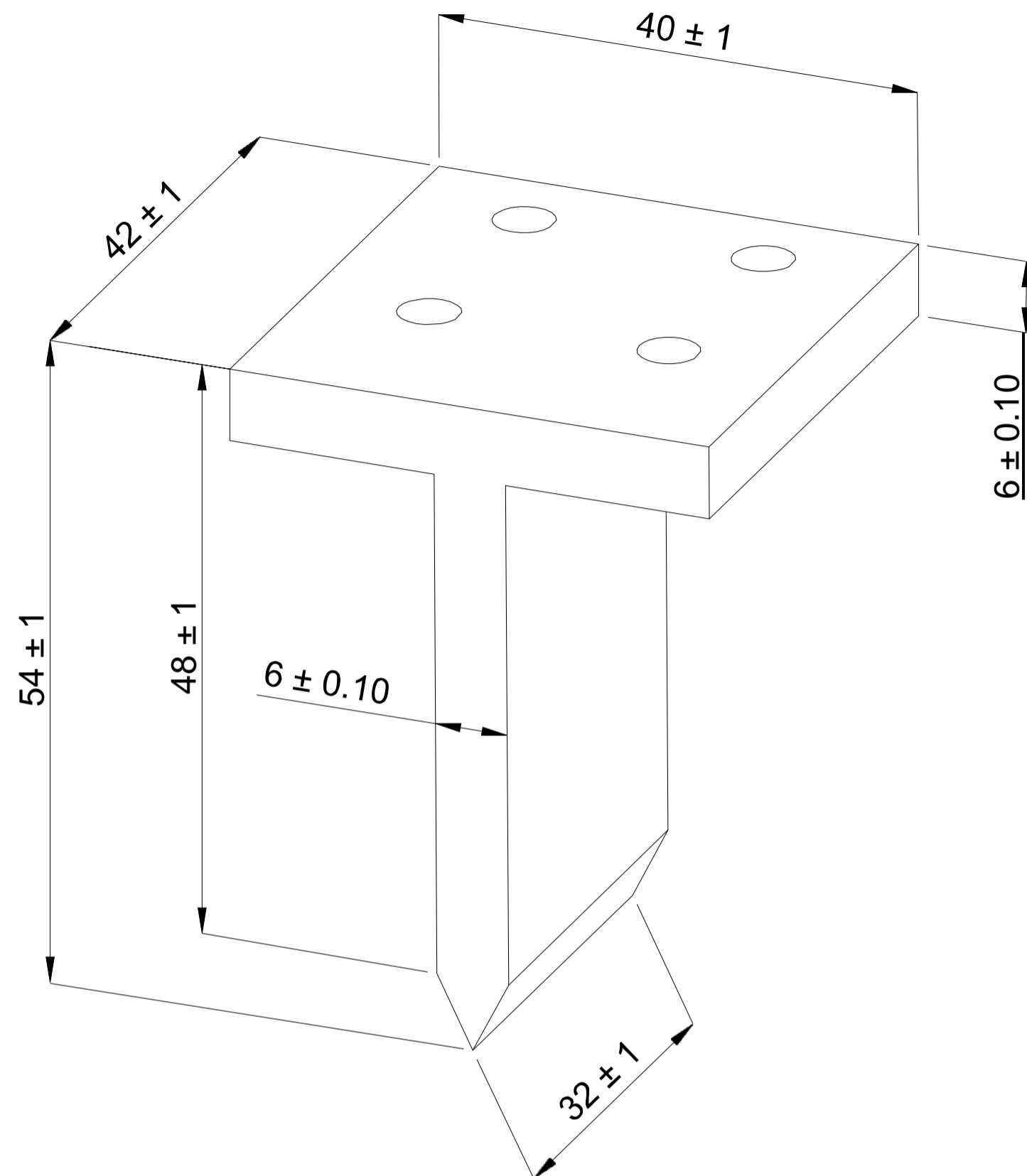
1. WORD 'PGVCL' AND TRADE MARK OF SUPPLIER SHALL BE EMBOSSED BOTH ON FUSE CARRIER AND BASE
2. GENERAL TOLERANCE  $\pm 5\%$  ON LENGTH, WIDTH AND HEIGHT OF THE BODY
3. CENTRE DISTANCE BETWEEN HOLES OF METAL PARTS  
UP TO 50 mm -  $\pm 1$  mm  
ABOVE 50 mm -  $\pm 2$  mm
4. WALL THICKNESS +5 mm TOLERANCE SHALL BE ALLOWED. NEGATIVE TOLERANCE NOT ALLOWED.
5. TOLERANCE  $\pm 5\%$  IN CERAMIC PARTS
6. ALL DIMENSIONS ARE IN mm

DISCOM Name:-UTTAR GUJARAT VIJ COMPANY LIMITED

GENERAL ARRANGEMENT AND COMPONENTS DRG.  
FOR 200Amp., 415 VOLTS KIT-KAT FUSE

DRG. NO.: -UGVCL/KIT-KAT/200A/13

SHEET 7 OF 9



## PART X

### NOTE:

1. WORD 'PGVCL' AND TRADE MARK OF SUPPLIER SHALL BE EMBOSSED BOTH ON FUDE CARRIER AND BASE
2. GENERAL TOLERANCE  $\pm 5\%$  ON LENGTH, WIDTH AND HEIGHT OF THE BODY
3. CENTRE DISTANCE BETWEEN HOLES OF METAL PARTS  
UP TO 50 mm -  $\pm 1$  mm  
ABOVE 50 mm-  $\pm 2$  mm
4. WALL THICKNESS +5 mm TOLERANCE SHALL BE ALLOWED.  
NEGATIVE TOLERANCE NOT ALLOWED.
5. TOLERANCE  $\pm 5\%$  IN CERAMIC PARTS
6. ALL DIMENSIONS ARE IN mm

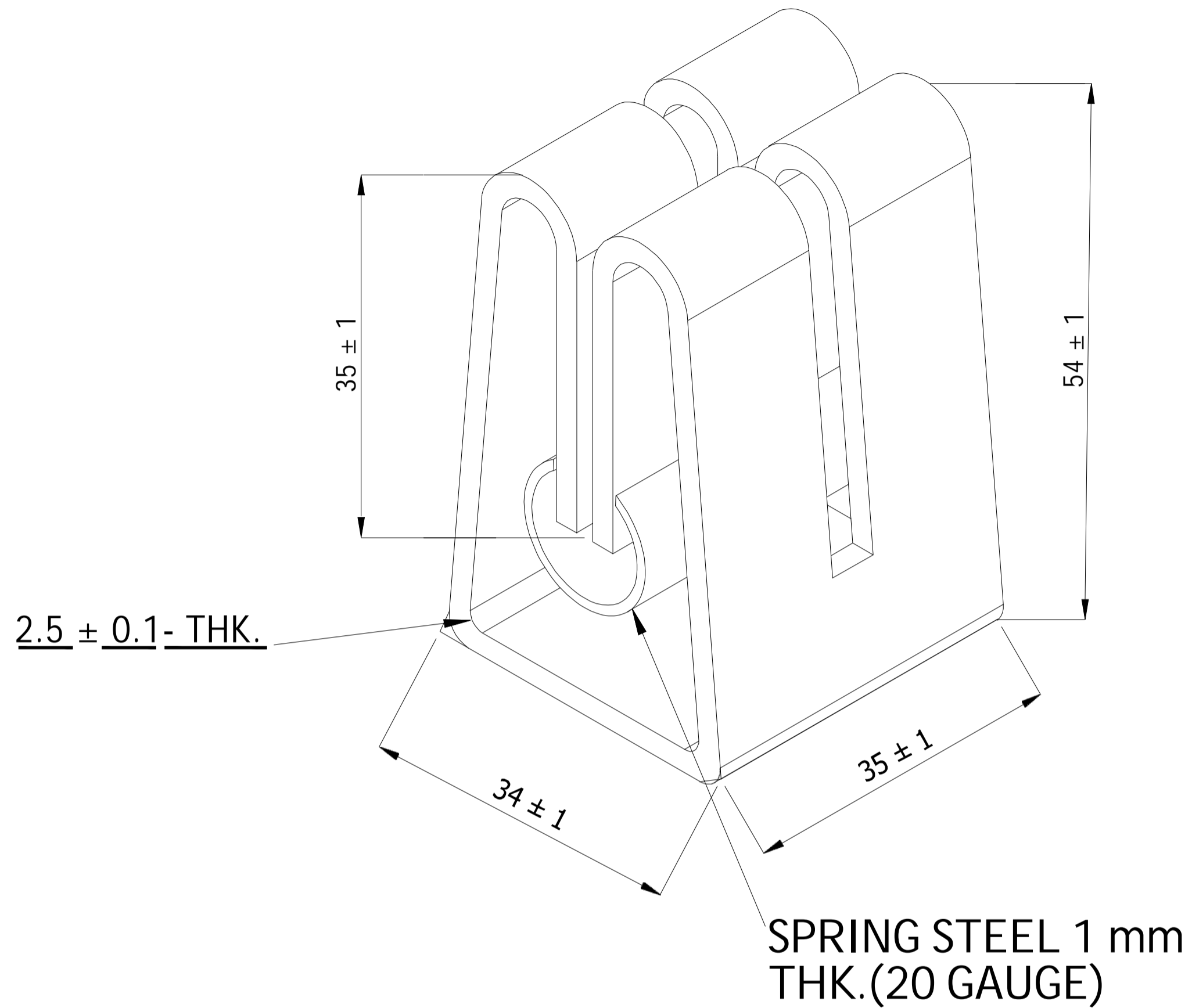
DISCOM Name:-UTTAR GUJARAT VIJ COMPANY LIMITED

GENERAL ARRANGEMENT AND COMPONENTS DRG.  
FOR 200 Amp., 415 VOLTS KIT-KAT FUSE

DRG. NO.: -UGVCL/KIT-KAT/200A/13

SHEET 8 OF 9





NOTE:

1. WORD 'PGVCL' AND TRADE MARK OF SUPPLIER SHALL BE EMBOSSED BOTH ON FUDE CARRIER AND BASE
2. GENERAL TOLERANCE  $\pm 5\%$  ON LENGTH, WIDTH AND HEIGHT OF THE BODY
3. CENTRE DISTANCE BETWEEN HOLES OF METAL PARTS  
UP TO 50 mm -  $\pm 1$  mm  
ABOVE 50 mm-  $\pm 2$  mm
4. WALL THICKNESS +5 mm TOLERANCE SHALL BE ALLOWED.  
NEGATIVE TOLERANCE NOT ALLOWED.
5. TOLERANCE  $\pm 5\%$  IN CERAMIC PARTS
6. ALL DIMENSIONS ARE IN mm

DISCOM Name:-UTTAR GUJARAT VIJ COMPANY LIMITED

GENERAL ARRANGEMENT AND COMPONENTS D FORRG.  
200 Amp., 415 VOLTS KIT-KAT FUSE

DRG. NO.: -UGVCL/KIT-KAT/200A/13

SHEET 9 OF 9