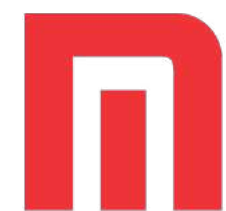




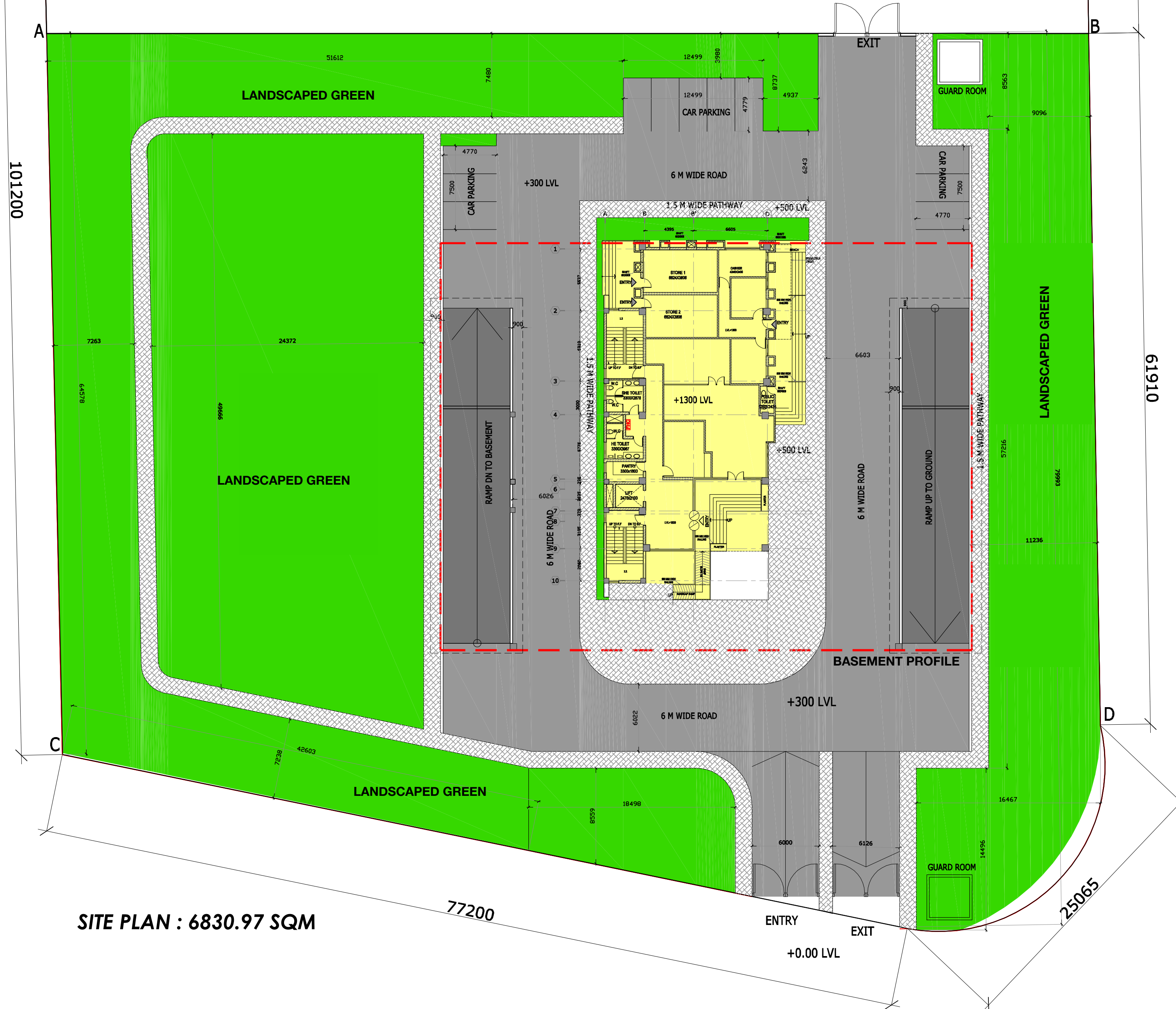
Uttar Gujarat Vij Company Limited

**CONSTRUCTION OF BOPAL URBAN & INDUSTRIAL DIVISION, SHILAJ & SHEILA SDN OFFICE  
BUILDING AT BLOCK NO. 184, FP NO. 34, VILLAGE AMBLI, AHMEDABAD :**

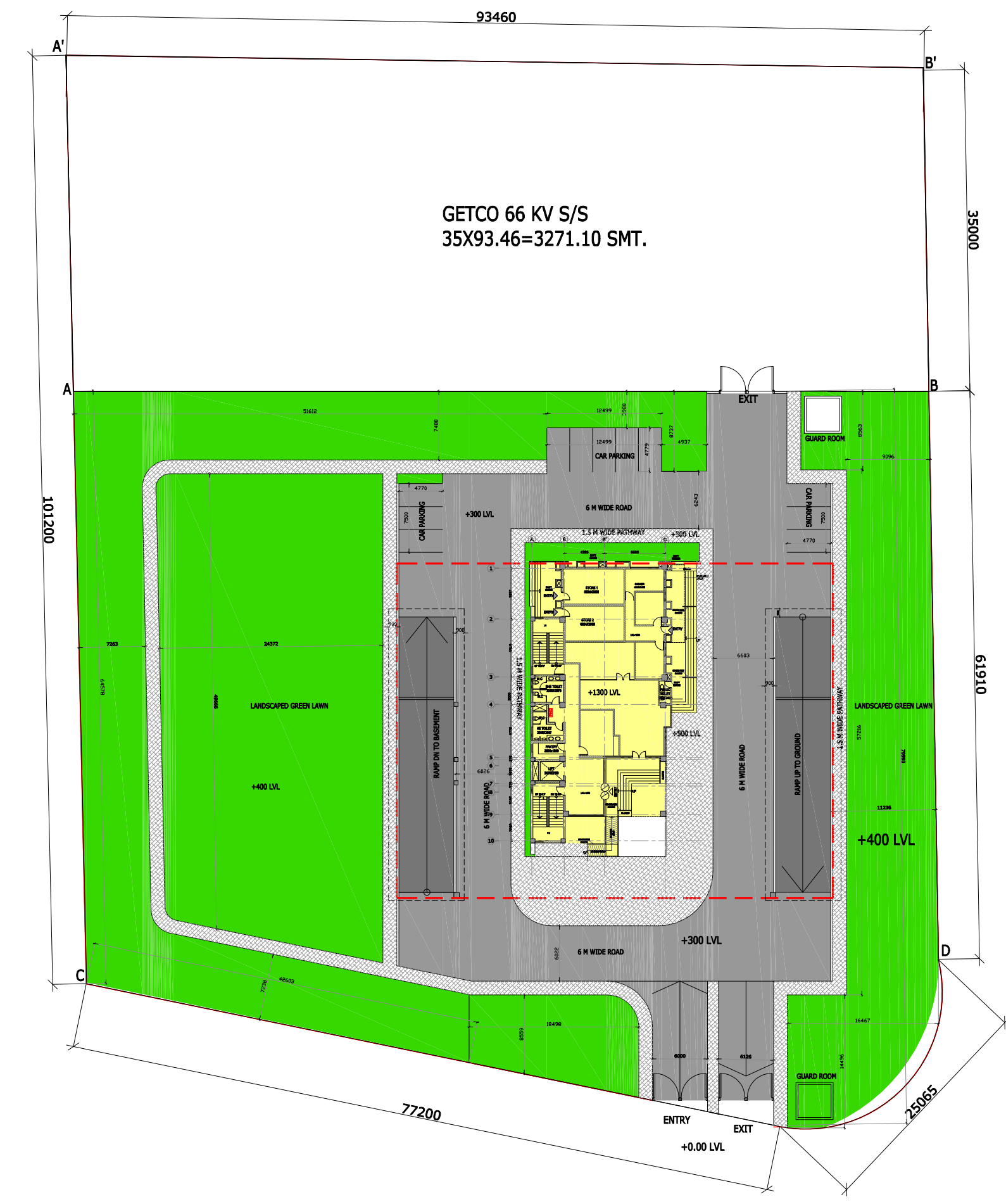
**CONCEPT DESIGN PLANS & 3D VIEW**



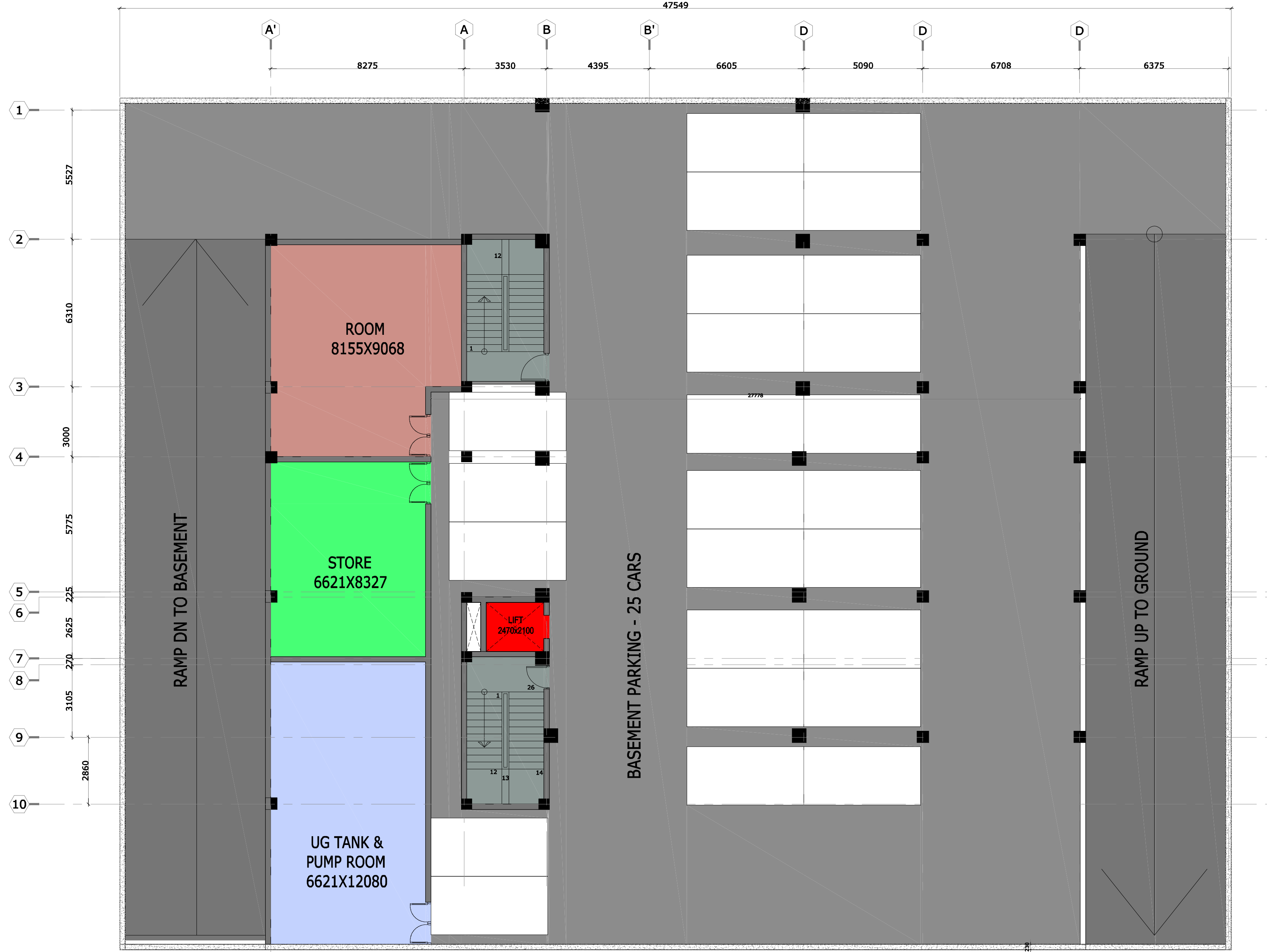
**ARCHITECT  
YETINDER MATHUR**



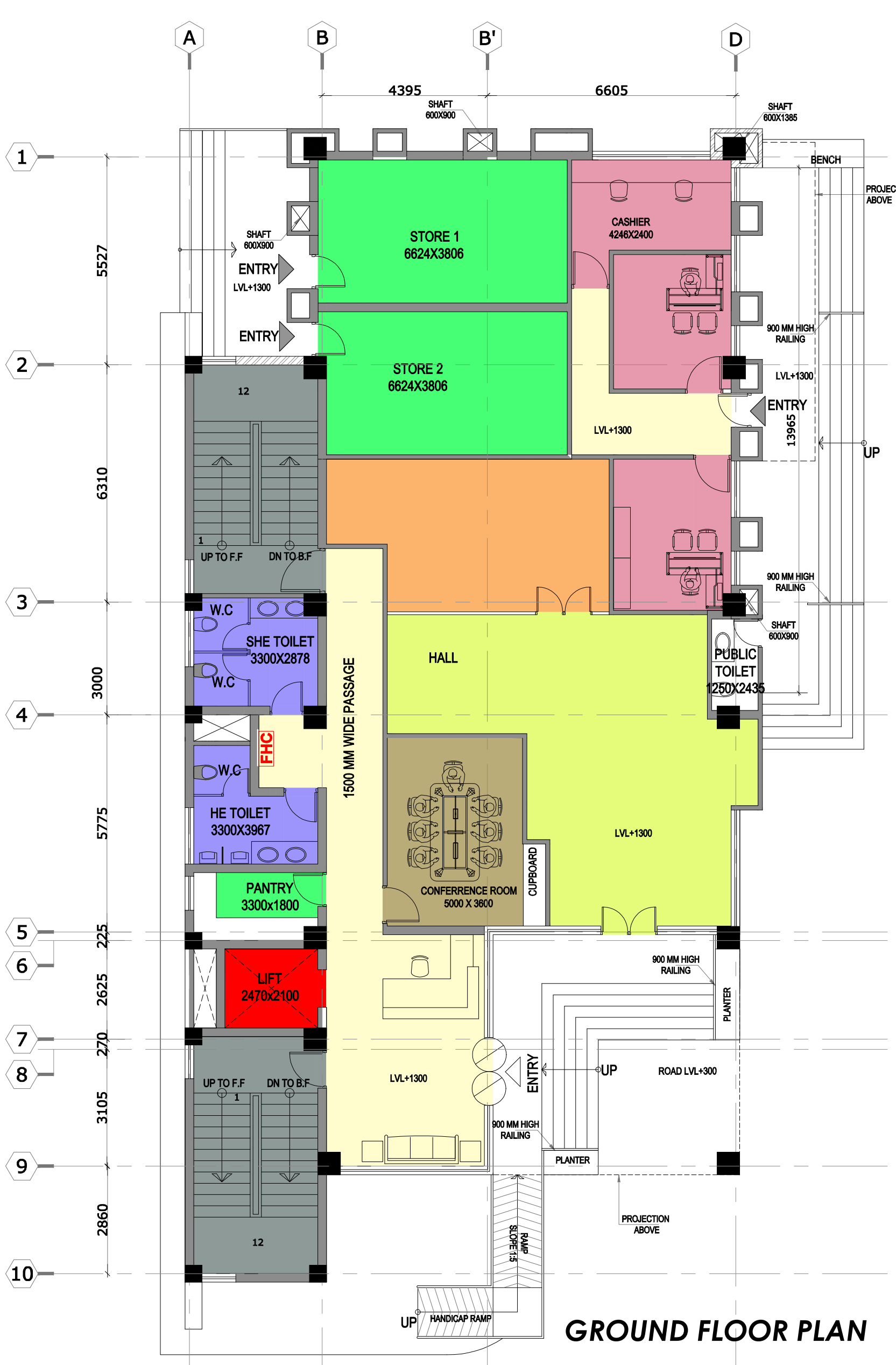
SITE PLAN : 6830.97 SQM



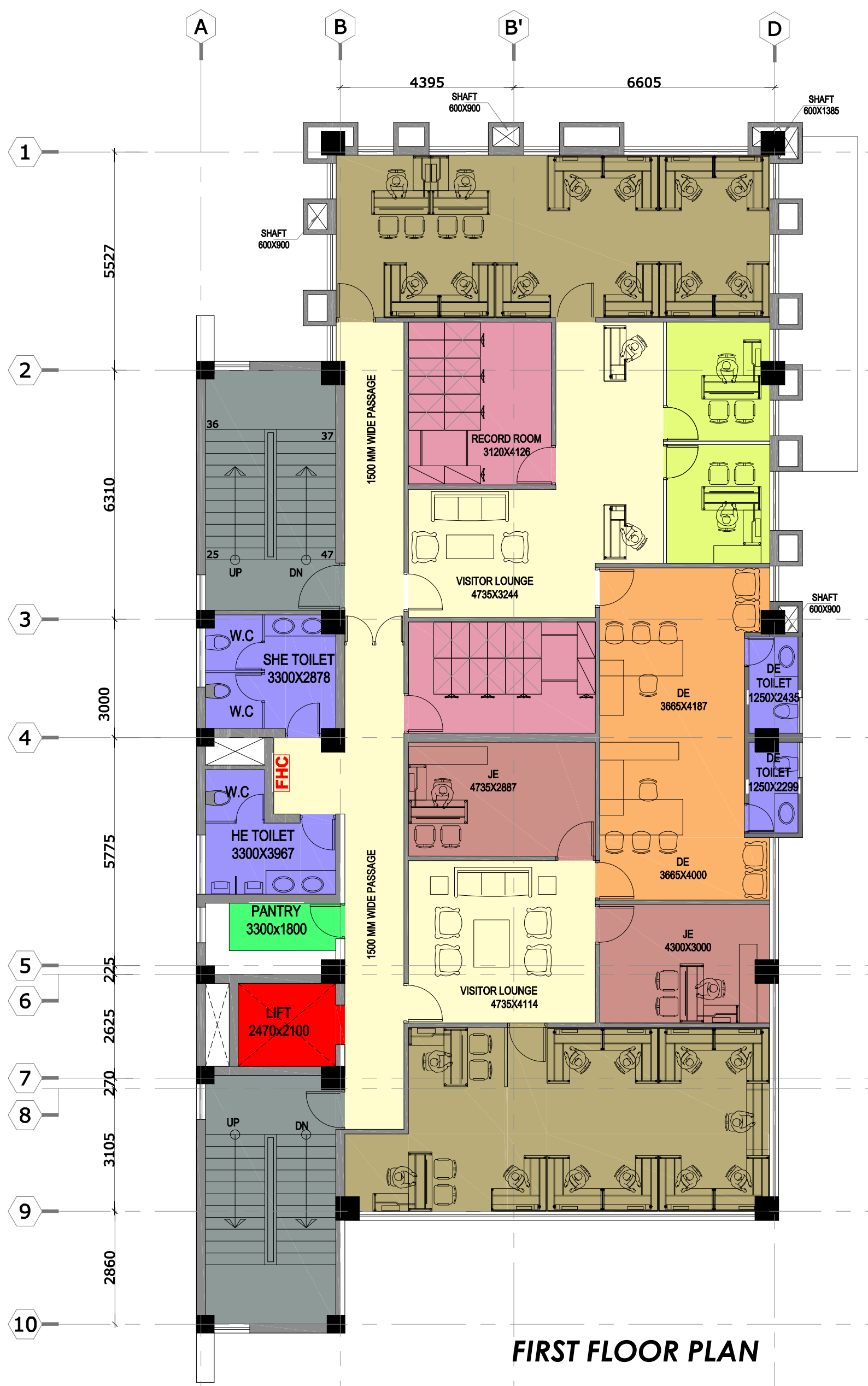
KEY PLAN



**CONSTRUCTION OF BOPAL URBAN & INDUSTRIAL DIVISION, SHILAJ & SHEILA SDN OFFICE BUILDING AT BLOCK NO. 184, FP NO. 34, VILLAGE AMBLI, AHMEDABAD**



**GROUND FLOOR PLAN**



**FIRST FLOOR PLAN**



**SECOND FLOOR PLAN**





**CONSTRUCTION OF BOPAL URBAN & INDUSTRIAL DIVISION, SHILAJ & SHEILA SDN  
OFFICE BUILDING AT BLOCK NO. 184, FP NO. 34, VILLAGE AMBLI, AHMEDABAD**







Uttar Gujarat Vij Company Limited

**CONSTRUCTION OF BOPAL URBAN & INDUSTRIAL DIVISION, SHILAJ & SHEILA SDN  
OFFICE BUILDING AT BLOCK NO. 184, FP NO. 34, VILLAGE AMBLI, AHMEDABAD**



**ARCHITECT  
YETINDER MATHUR**