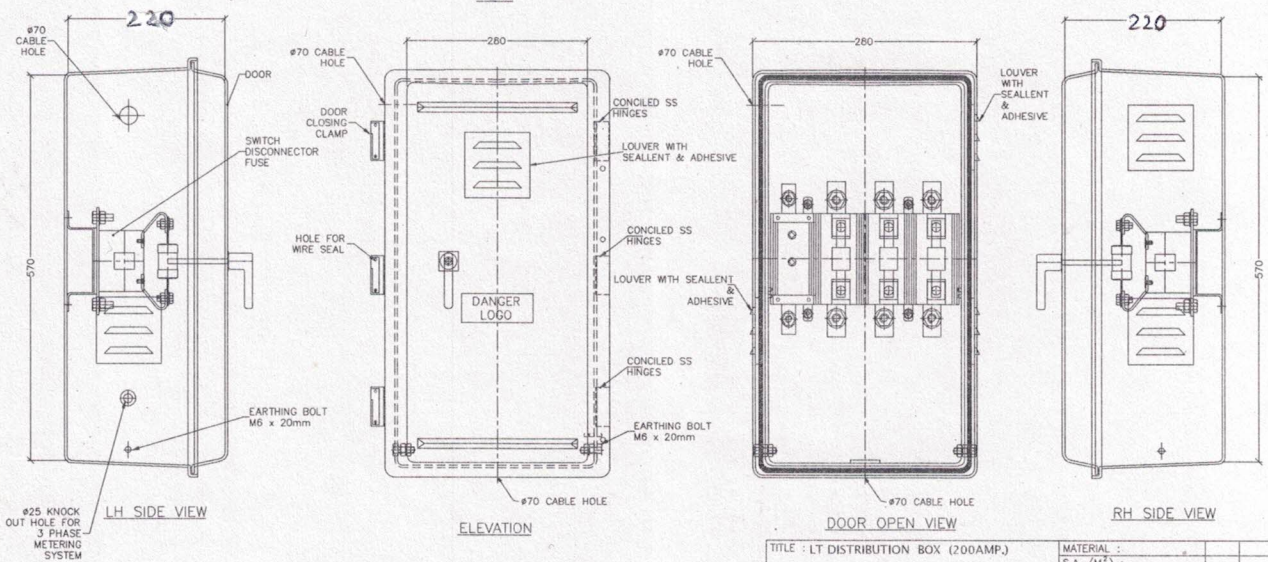


NOTES :-

- (1) MADE OUT OF (THERMOSETTING PLASTIC) SHEET MOULDING COMPOUND BY THE PROCESS OF HOT PRESS COMPRESSION MOULDING CONFIRMING TO IS : 13410
- (2) SMC BASE OR DOOR SHALL NOT SOFTEN OR BEND ON HEATING.
- (3) DOOR FITTED TO BASE BY CONCEALED SS HINGES.
- (4) DIMENSIONS :
INSIDE :- H=570mm, W=280mm, D= **220mm**
THICKNESS OF SMC = 2mm (MINIMUM)
- (5) COLOUR :- OFF WHITE / GRAY



TITLE : LT DISTRIBUTION BOX (200AMP.)				MATERIAL :	
				S.A (M ²) :	
				WEIGHT (Kg.) :	
CLASS. NO.	SCALE	DRAWN	CHECKED		
E/11/1	-		APPROVED		
UNLESS AND OTHERWISE SPECIFIED ALL DIMENSION ARE IN MM.			TOLERANCE	Uttar Gujarat Vij Company Ltd Corporate Office, Vanager Road, Mehsana	