

Sr	Parts	Size	Remarks	Qty	Sr	Parts	Size	Remarks	Qty
23	Earthing Strip - 4 Mir	F 38x3	MS HDG	1	26	Nut & Bolt	M12x30	With 2 plain washer	5
22	Earthing Strip - 3 Mir	F 38x3	MS HDG	1	25	Filling Compound	-	~25kg Bags	2
21	Earthing Electrode - Pipe Type	40 NB	MS HDG	1	24	Insulating Sleeve	As per Dwg	Heat Shrinkable	-

Bill of Materials

CONTROLLED UNLESS OTHERWISE SPECIFIED THIS DRAWING IS SUBJECT TO REVISION / UPDATE

NOTES:

1. ALL DIMENSIONS ARE IN MM UNLESS OTHERWISE NOTICED.
2. IN DIMENSION TOLERANCE SHALL BE ±0.5% MIN. TOLER.
3. ALL CURRENT CARRYING PARTS TO BE TIN PLATED.
4. ALL FERROUS PARTS TO BE HOT DIP GALVANIZED AS PER IS 4759-1998 Min 60g/m²

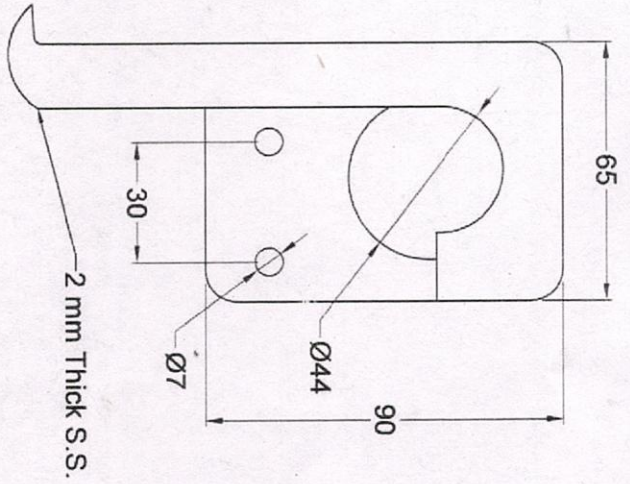
11KV 600A ABEB Switch Parts Drawing
 Research Proj. No: RP 014 - 39.5 - Part 3/3
 Date: 13-11-2019

Gujarat Power Research & Development Cell,
 IIT Gandhinagar, Gandhinagar, Gandhinagar

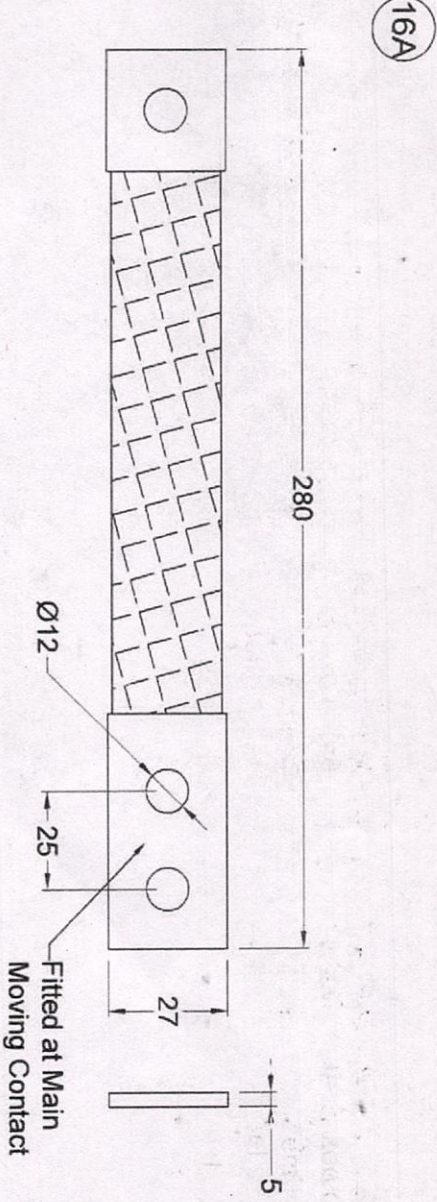


Sheet: 3 of 3

Handwritten signatures and names: T. Anand Borasera, R. D. Patel, R. B. Patel



6A



16A

Sr	Parts	Size	Remarks	Qty
6A	Locking cum Operating Hook for main switch	-	Stainless Steel	3
16A	Flexible Braided Copper - Main Switch	As per Drg	Tinned Cu	6

Bill of Materials

CONTROLLED UNLESS OTHERWISE SPECIFIED

THIS DRAWING IS SUBJECT TO REVISION / UPDATE

Notes :

1. Operating Hook on Main Moving Contact are replaced with Locking cum Operating Hook - (Part - 6A) ; Operating hook on Earth Moving Contact remains as it is.
2. Main Moving Contact shall be provided with (Part - 16A) - 6 Nos,
3. Earth Moving Contact with (Part - 16) - 6 Nos.
4. Main Moving Contact (Part - 9) hole arrangements to be modified as per above Notes.
5. Terminal Lug (Part - 18) should be 135mm Long, with 16mm ID.
6. Part 6, 6A and 14 are to be fitted with M6 SS Fasteners. All other Fasteners should be Hot Dip Galvanized of M10 or M12. Unless otherwise Specified.
7. For mounting following HDG Fasteners to be provided with 2 plain and 1 spring washer.
 - a. M12 x 75 - 6 Nos - Switch Mounting
 - b. M16 x 70 - 4 Nos - Pole Mounting
8. All Nuts, Bolts and washers of M10 and above shall be Hot Dip Galvanized of 5.6 Grade; All Nuts, Bolts and washers of smaller than M10 shall be of Stainless Steel.
9. "Part Numbers" mentioned above are to be read from Tender Part Drawings 1 to 3.

NOTES:

1. ALL DIMENSIONS ARE IN MM UNLESS OTHERWISE NOTICED.
2. IN DIMENSION TOLERANCE SHALL BE ±0.10, MIN. ±0.15, MAX.
3. ALL CURRENT CARRYING PARTS TO BE TIN PLATED.
4. ALL FERROUS PARTS TO BE HOT DIP GALVANIZED AS PER IS 4753-1999 Min. 80gms/m²

11kV 600A ABEB Switch Additional Parts Drawing

Research Proj. No: RP 014 - 39.5 - Add. Part 1/1
Date: 25-08-2020

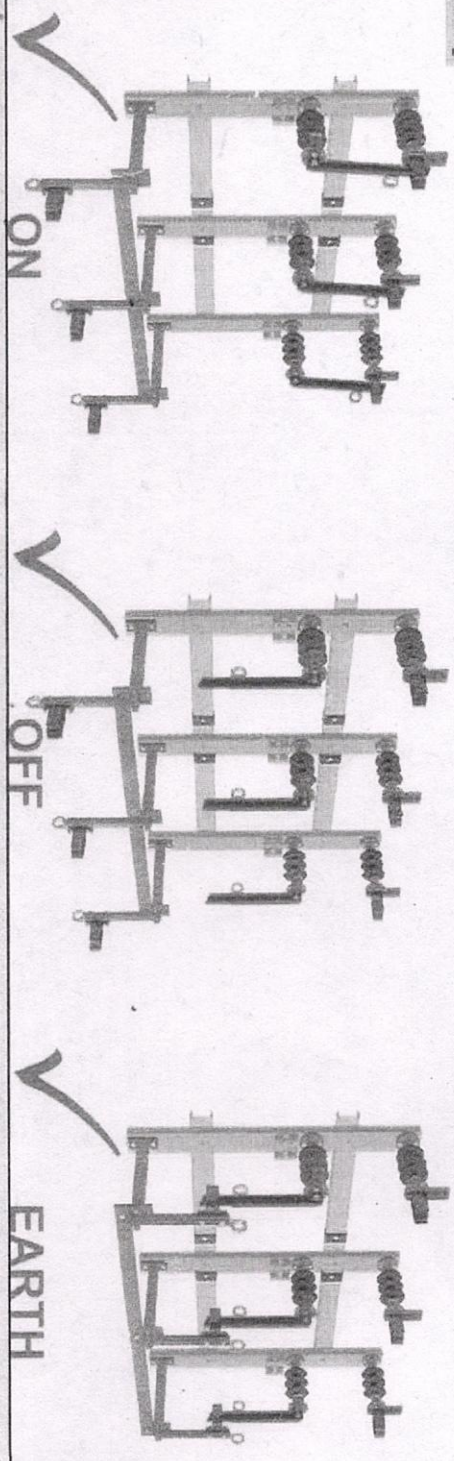
Gujarat Power Research & Development Cell,
IIT Gandhinagar Research Park,
IIT Gandhinagar, Palaj, Gandhinagar

Sheet: 1 of 1

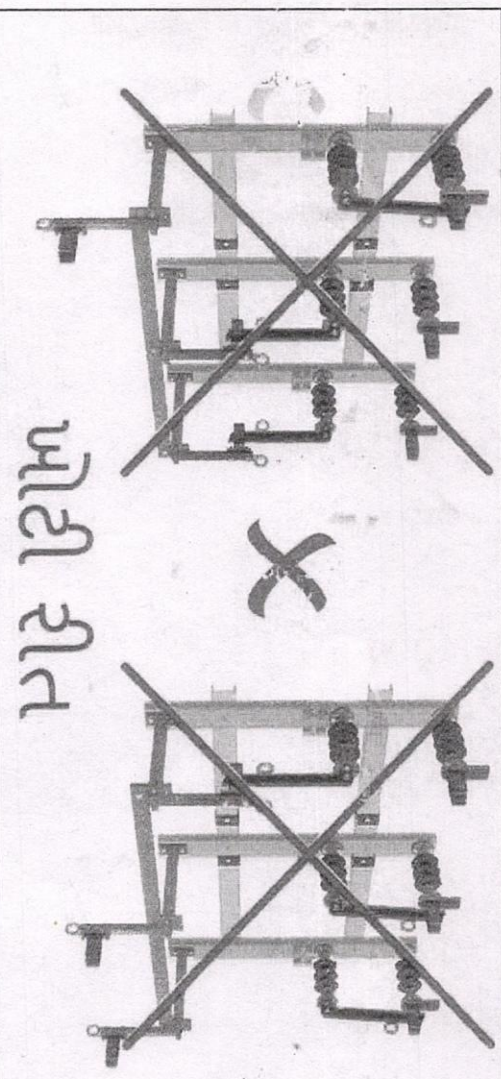
Approved By: R B Patel

(Signature)

Gujarat Power Research & Development Cell



રિચ ખાવર બંધ હોય ત્યારે જ ગાલુ-બંધ કરવા



AT No:

Manufactured by:

Banner Size - 400x300mm
Banner Material - 3mm PU Foam Sheet

Drawing Prepared By:	Jignesh Borisagar	11kV 600A ABB Switch Banner Drawing
Checked By:	R D Patel	Research Prof. No: RP 014 - 39.5 - Banner
Approved By:	R B Patel	Date: 13-11-2018
Gujarat Power Research & Development Cell, IIT Gandhinagar Research Park, IIT Gandhinagar, Palaj, Gandhinagar		Sheet: 1 of 1

CONTROLLED UNLESS OTHERWISE SPECIFIED

THIS DRAWING IS SUBJECT TO REVISION / UPDATE

1 2 3 4 5 6 7 8