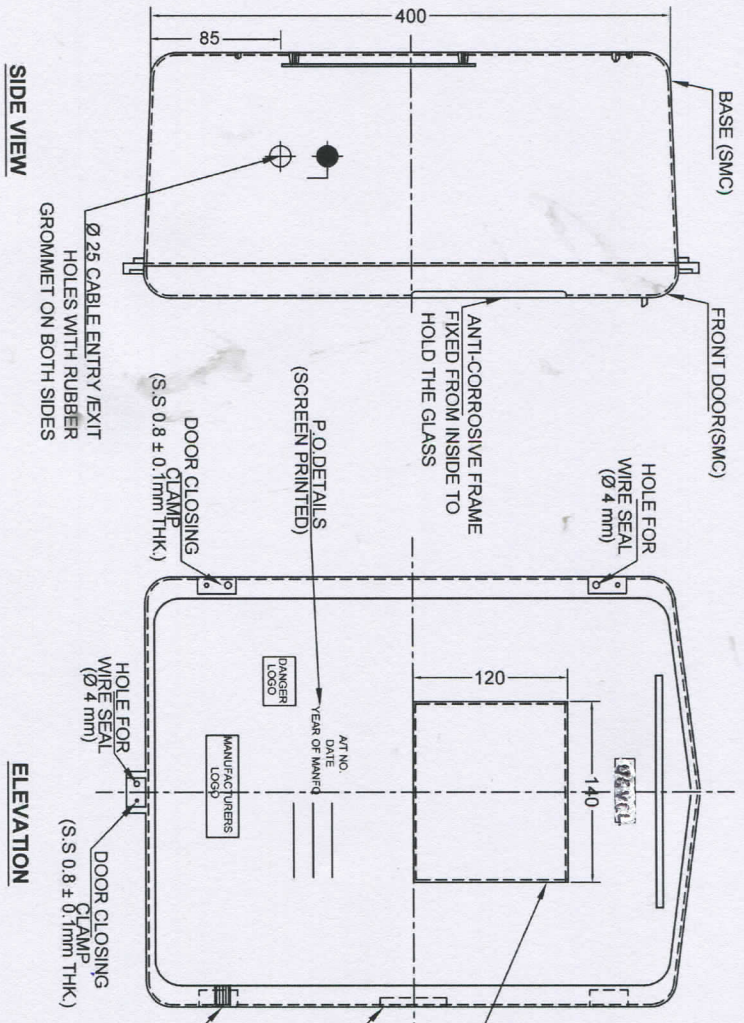
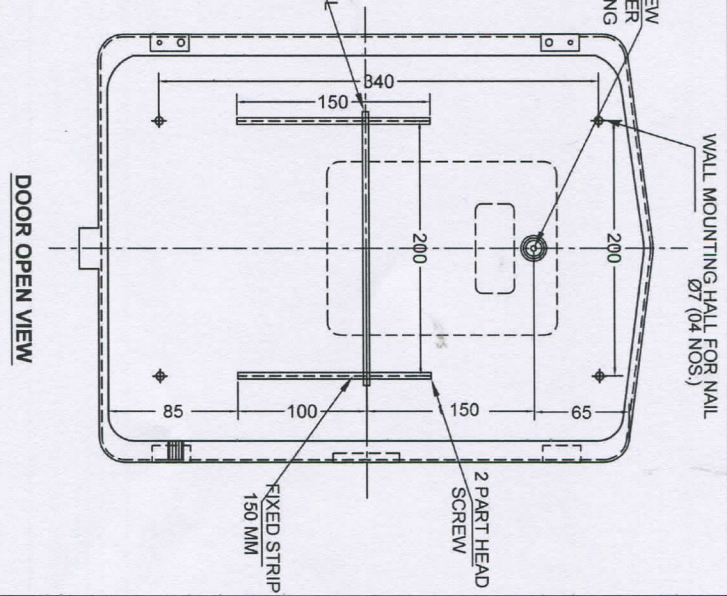


**PLAN**



**SIDE VIEW**

**ELEVATION**



**DOOR OPEN VIEW**

- NOTES:**
- MADE OUT OF (THERMOSETTING PLASTIC) SHEET, MOLDING COMPOUND BY THE PROCESS OF HOT PRESS COMPRESSION MOLDING, CONFIRMING TO IS:13410.
  - SMC BASE OR DOOR SHALL NOT SOFTEN OR BEND ON HEATING.
  - DOOR FITTED TO BASE BY S.S CONCEALED HINGES WITH DOOR CLOSING CLAMP.
  - DIMENSIONS:**  
INSIDE :- H=400mm, W=300mm, D=190mm,  
THICKNESS OF SMC=2mm
  - COLOUR :- OFF WHITE**

<b>TITLE:</b>		<b>SCALE:</b>		<b>APPROVED BY:</b>	
3-PHASE SMC METER BOX FOR WHOLE CURRENT METER		all dimensions are in mm			
<b>NAME OF DISCOM:</b>		NTS			
DRG NO.:- DISCOM / SMC BOX /		NTS			