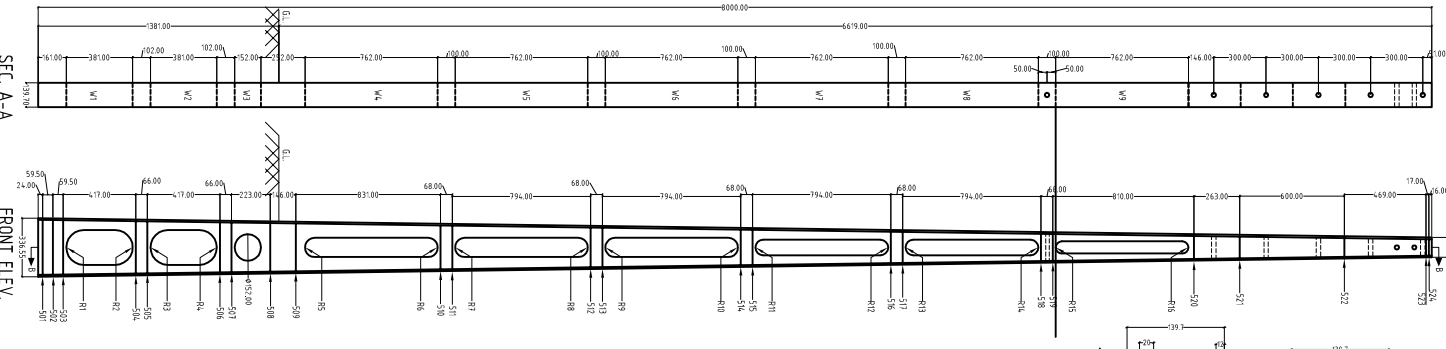
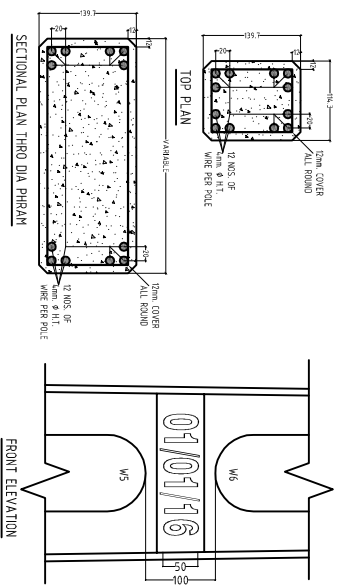


FIG 4mm & H.T. Steel STRIRUPS

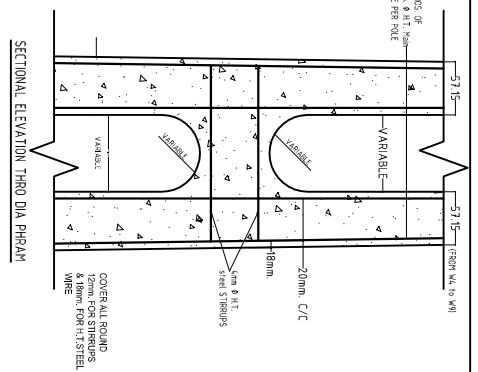


SEC. A-A

FRONT ELEV.



FRONT ELEVATION



SECTIONAL ELEVATION THRO DIA PHEAM

FOR 4mm & H.T. STEEL STRIRUPS

STIRRUP NO. FROM BOTTOM	STIRRUP DIST. FROM BOTTOM	WIDTH OF POLE AT POSITION	RECTANGLE DIMENSION OF STRIRRUP	OVER LAP LENGTH (6d)	TOTAL LENGTH OF STRIRRUP
501	24	335.9	305x110	36	866
502	83	334.2	305x110	36	866
503	143	332.6	305x110	36	866
504	560	321.0	290x110	36	836
505	626	319.2	290x110	36	836
506	1043	307.6	275x110	36	806
507	1109	305.7	275x110	36	806
508	1332	299.5	265x110	36	786
509	1478	295.5	265x110	36	786
510	2309	272.4	240x110	36	736
511	2377	270.5	240x110	36	736
512	3171	248.5	215x110	36	686
513	3239	246.6	215x110	36	686
514	4033	224.5	190x110	36	636
515	4101	222.6	190x110	36	636
516	4895	200.6	165x110	36	586
517	4963	198.7	165x110	36	586
518	5757	176.6	145x110	36	546
519	5825	174.7	145x110	36	546
520	6635	152.2	120x110	36	496
521	6898	144.9	115x110	36	486
522	7498	128.3	95x110	36	446
523	7967	115.2	85x110	36	426
524	7984	114.8	85x110	36	426
TOTAL LENGTH (MM)					16114

WINDOW FORMS

MARK	RADIUS OF CURVATURE	IN MM
R 1	80	
R 2	78	
R 3	78	
R 4	77	
R 5	88.5	
R 6	80	
R 7	76	
R 8	68	
R 9	65	
R 10	53.5	
R 11	53	
R 12	44	
R 13	41.5	
R 14	32	
R 15	29.6	
R 16	24.4	

WEIGHT OF WIRES PER POLE

TENSION WIRE	LENGTH (Mtr.)	UNIT WT (kg/mtr)	TOTAL WT. (kg)
4mm DIA. MAIN HT STEEL WIRE	96.01	0.099	9.504
4mm DIA. ... H.T. WIRE	16114	0.099	160

- NOTE -
- 1) THE DIMENSIONS SHOWN ARE IN MM
  - 2) ALL STRIRUPS SHALL BE WELDED AT LAPS
  - 3) TOTAL NOS. OF STRIRUPS FOR 4mm & H.T. STEEL WIRE SHALL BE 24 NOS. (501 TO 524)
  - 4) THE THICKNESS OF WIRE SHOWN AS STRIRUP SHALL BE FROM WINDOWS W.4. TO W.4 EXCEPT BOTTOM MOST THREE WINDOWS
  - 5) APPROXIMATE WEIGHT OF POLE 418kg
  - 6) BOTTOM & TOP OF P & S C POLE SHALL BE PAINTED WITH ANTI CORROSIIVE BLACK EPOXY BASE BITUMINOUS PAINT.
  - 7) STRIRUPS IN POLE SHALL NORMALLY BE 4MM H.T. WIRE IN CASE MANUFACTURER DESIRES HE MAY USE M.S. BARS OF 5MM /6 MM AS SHOWN IN TABLE ABOVE.
  - 8) TOTAL WEIGHT OF 4mm H.T. STEEL IS 9825 kg PER POLE CONSIDERED INCLUSIVE OF ALL WASTAGES, END PIECES & ROLLING MARGIN PLUS PIECES OF GAP BETWEEN TWO POLES WHILE FINISHING MATERIALS ACCORDING TO ACTUAL WEIGHT OF EACH COIL IS TO BE CONSIDER AS PER THE TEST REPORT SUBMITTED BY THE SUPPLIER.

PRESTRESSED CONCRETE POLE-8M/200 KG  
SHOWING DETAILED DIMENSION  
FOR READY MADE POLE SUPPLY

DT. 28-12-15

UGVCL/PSC Pole/8 MTR/C-583

R/02