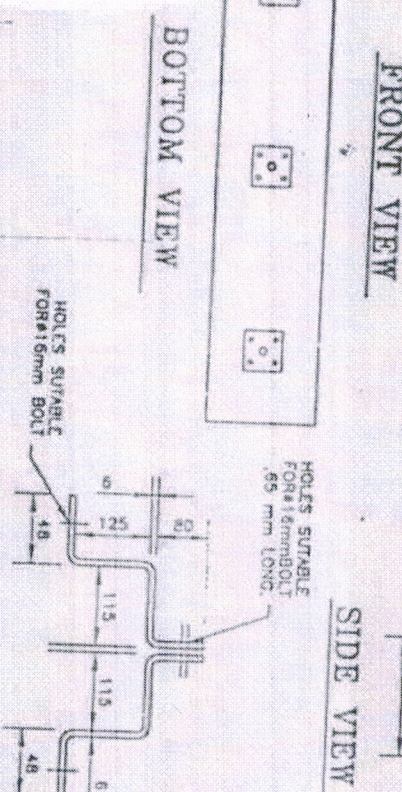
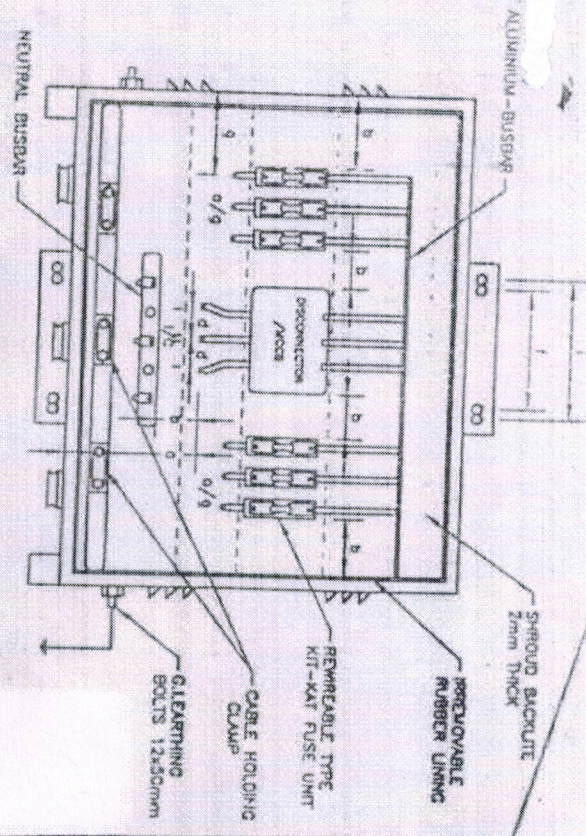
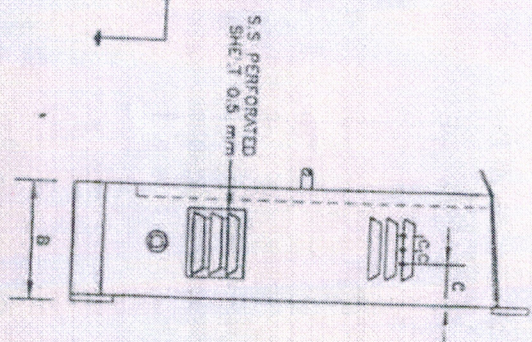
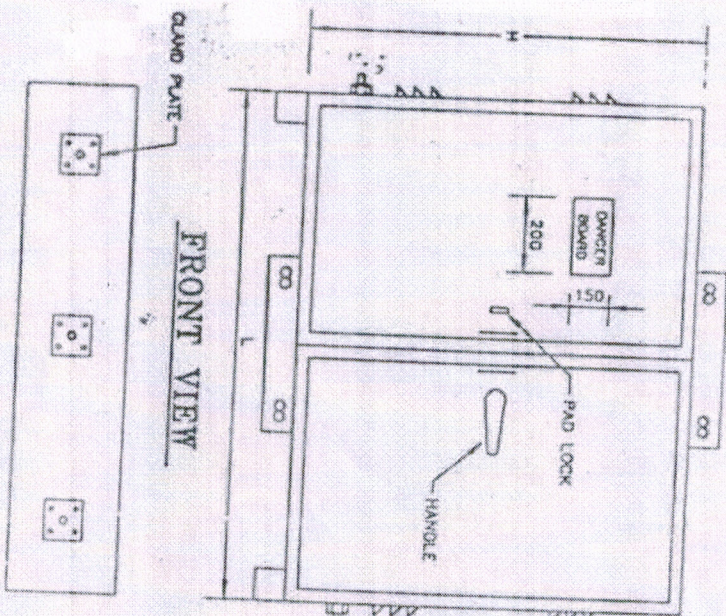


GENERAL ARRANGEMENT DRAWING FOR 25/63/100KVA  
DISTRIBUTION BOX WITH DISCONNECTOR



RATING	ALUMINIUM BUSBAR	SIZE IN mm	CURRENT DENSITY
25KVA	MAIN - NEUTRAL -	25x3	NOT MORE THAN 1.4A/mm <sup>2</sup>
63KVA	MAIN - NEUTRAL -	25x6	NOT MORE THAN 1.4A/mm <sup>2</sup>
100KVA	MAIN - NEUTRAL -	25x6	NOT MORE THAN 1.4A/mm <sup>2</sup>

DIMENSIONS IN mm

RATING	L	B	H
25KVA	975	275	825
63KVA	975	275	825
100KVA	1025	275	825

MIN. CLEARANCES

a = 325mm
b = 75mm
c = 35mm
d = 75mm
e = 75mm
f = 290mm
g > = b
i = 330mm

FRONT VIEW (DOOR NOT SHOWN)

NOTES :-  
ENCLOSURE SHEET THICKNESS NOT LESS THEN 1.6 mm.  
SUITABLE INSULATING SHROUDS SHALL BE PROVIDED.  
ALL BUSBAR COVERED WITH HEAT SHRINKABLE SLEEVE  
ENCLOSURE IS DUST AND VERMIN PROOF SUITABLE FOR IP 44.  
HOT DIP GALVANISED 50x6 mm FLAT PROVIDED FOR CLAMP.  
GENERAL TOLERANCE ON DIMENSIONS ±3%  
ALL DIMENSION ARE IN mm.

DRG no. UGVCL/LTDB/06-07/01-R1  
**UGVCL**